

King's Cross Road, WC1X

£125,000

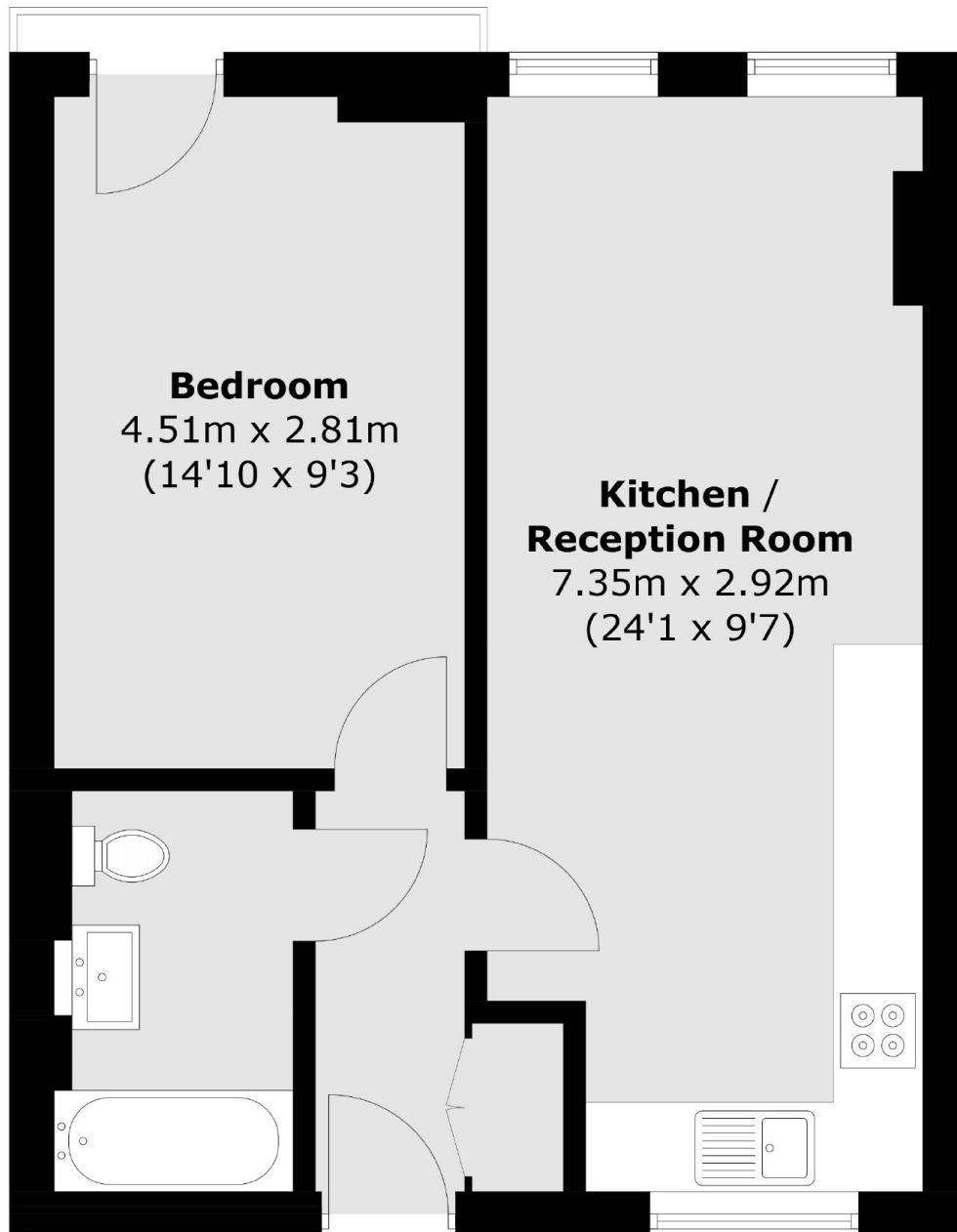
A beautifully presented one-bedroom flat situated on the third floor of a modern development. This east-facing apartment with floor-to-ceiling windows boasts a stylish open-plan kitchen and living area with laminate flooring throughout. The property offers a communal gardens and bike storage.

The unfurnished property is nestled just a 10-minute walk from King's Cross and St Pancras International stations, this flat enjoys a prime location on King's Cross Road in London's most vibrant and well-connected neighbourhoods.

Features

- Prime Location
- East-Facing
- Long Lease
- Communal Gardens
- Floor-To-Ceiling Windows
- Unfurnished

King's Cross Road,
London, WC1X



Total area (approx.): 43.0 sq. m (462.8 sq. ft)

Dexters

Bloomsbury
55-56 Coram Street
London
WC1N 1HB
Sales
020 7833 4466

Energy Rating: C. We aim to make our particulars both accurate and reliable. However they are not guaranteed; nor do they form part of an offer or contract. If you require clarification on any points then please contact us, especially if you're traveling some distance to view. Please note that appliances and heating systems have not been tested and therefore no warranties can be given as to their good working order.

 **RICS** | Regulated
Estate Agent
and Letting Agent

[dexters.co.uk](https://www.dexters.co.uk)