



Bidborough Street, WC1H

£395 Per week

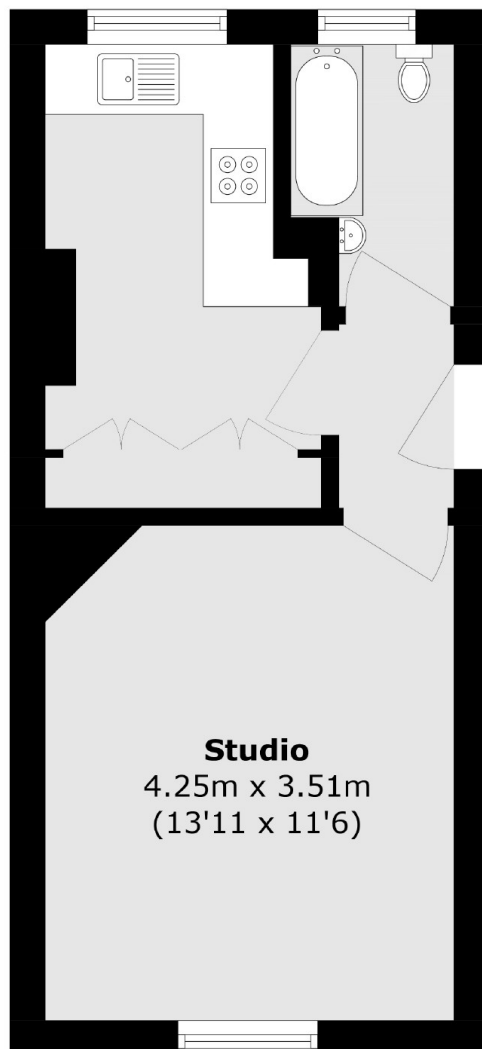
This furnished studio flat features elegant wooden flooring throughout and has excellent storage. The living area comes fully furnished, perfect for those looking for a move-in-ready home.

Queen Alexandra Mansions is a well-regarded and historic red-brick mansion block located in Bloomsbury, one of Central London's most desirable and well-connected areas. With a short walk to King's Cross and Russell Square, it has excellent transport link.

Features

- Prime Location
- Furnished
- Wooden Flooring
- Excellent Transport Links
- Portered Building
- Lift access

Bidborough Street,
London, WC1H



Total area (approx.): 29.4 sq. m (316.4 sq. ft)

Dexters

Bloomsbury
55-56 Coram Street
London
WC1N 1HB
Lettings
020 7833 4488

Energy Rating: C. We aim to make our particulars both accurate and reliable. However they are not guaranteed; nor do they form part of an offer or contract. If you require clarification on any points then please contact us, especially if you're traveling some distance to view. Please note that appliances and heating systems have not been tested and therefore no warranties can be given as to their good working order.

 **RICS** | Regulated
Estate Agent
and Letting Agent

[dexters.co.uk](https://www.dexters.co.uk)