



## Gray's Inn Road, WC1X

**£866** Per week

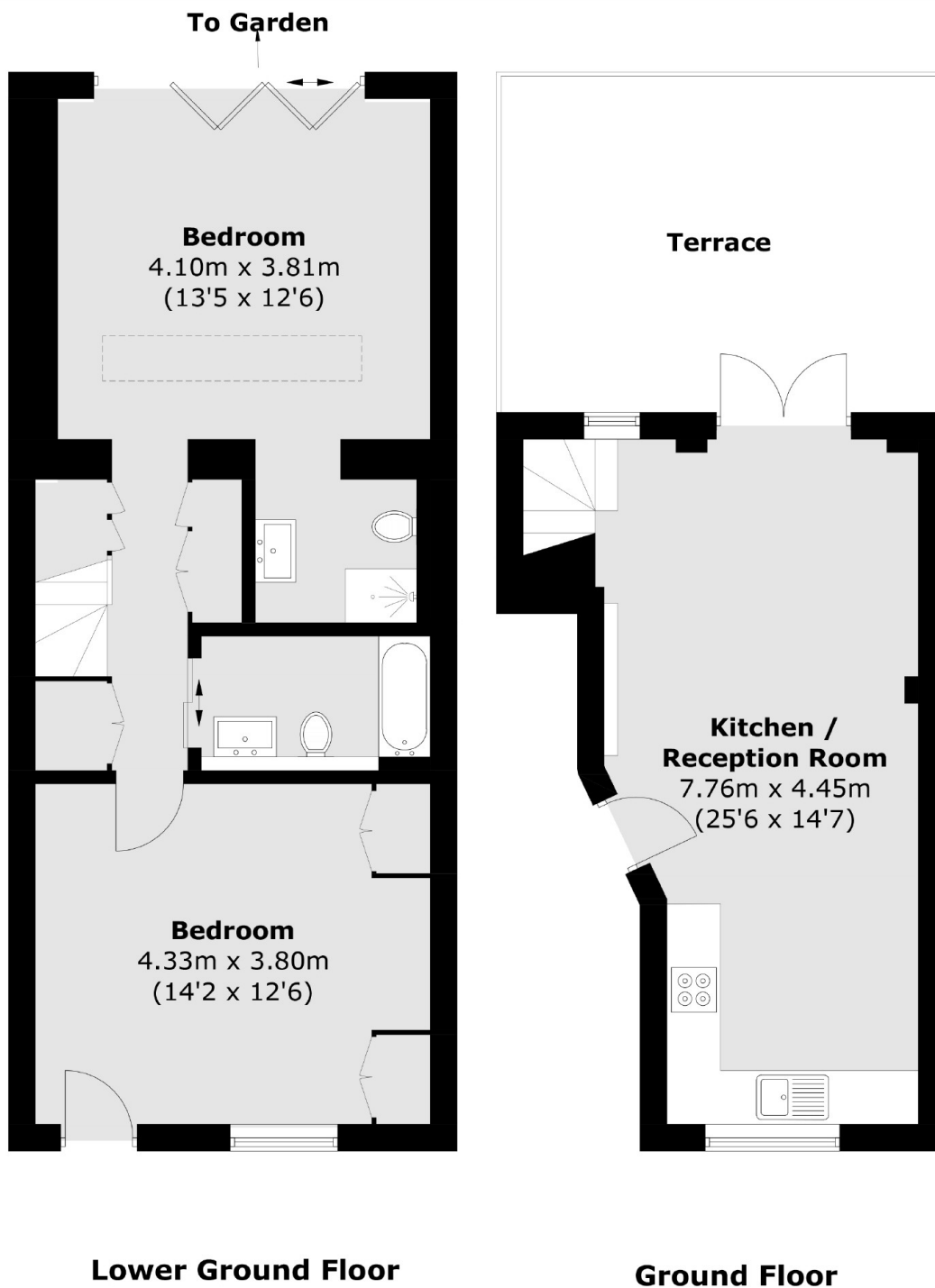
A recently refurbished two bedroom property with ample storage space. The stylish, open-plan kitchen and living room leads onto the first of two private patios, and houses all the modern appliances. The property is flooded with natural light.

Gray's Inn Road is conveniently situated near Kings Cross Station, providing easy access to major transportation. Residents of the area benefit from the proximity of a range of shops and cafes, enhancing their daily convenience and local amenities.

### Features

- Newly Refurbished
- Two Double Bedrooms
- Two Bathrooms
- Two Private Terraces
- Open Plan Kitchen & Reception
- Natural Light

# Gray's Inn Road, London, WC1X



Total area (approx.): 76.2 sq. m (820 sq. ft)  
Terrace area (approx.): 18.3 sq. m (197 sq. ft)

## Dexters

Bloomsbury  
55-56 Coram Street  
London  
WC1N 1HB  
Lettings  
020 7833 4488

Energy Rating: C. We aim to make our particulars both accurate and reliable. However they are not guaranteed; nor do they form part of an offer or contract. If you require clarification on any points then please contact us, especially if you're traveling some distance to view. Please note that appliances and heating systems have not been tested and therefore no warranties can be given as to their good working order.

 **RICS** | Regulated  
Estate Agent  
and Letting Agent

[dexters.co.uk](https://www.dexters.co.uk)