



Regent Square, WC1H

£550,000

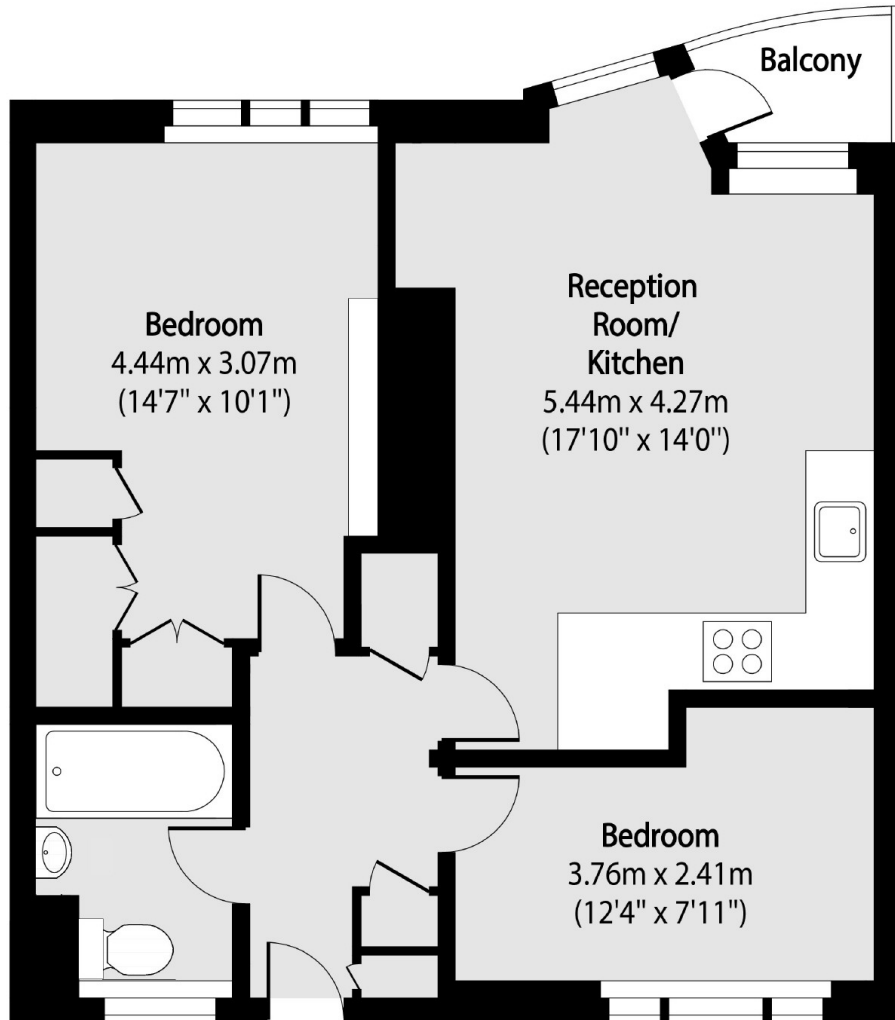
This fourth floor apartment features two generous double bedrooms and a private balcony overlooking a peaceful garden square. The newly fitted John Lewis kitchen is equipped with quartz worktops and Amtico flooring, combining style and durability for everyday living.

The property is situated on Regent Square, providing convenient access to Gray's Inn Road and the vibrant Brunswick Centre. Ideally positioned between Angel and London King's Cross, the apartment offers seamless connections to the City and West End, making it perfect for both work and leisure.

Features

- Two Double Bedrooms
- Excellent Condition
- Private Balcony
- Overlooking Garden Square
- Parking Available
- No Onward Chain

Regent Square, London, WC1H



Total area (approx): 55.83 sq m (601 sq. ft)

Terrace total area (approx): 1.76 sq m (19 sq. ft)

Dexters

Bloomsbury
55-56 Coram Street
London
WC1N 1HB
Sales
020 7833 4466

Energy Rating: D. We aim to make our particulars both accurate and reliable. However they are not guaranteed; nor do they form part of an offer or contract. If you require clarification on any points then please contact us, especially if you're traveling some distance to view. Please note that appliances and heating systems have not been tested and therefore no warranties can be given as to their good working order.

 **RICS** | Regulated
Estate Agent
and Letting Agent

[dexters.co.uk](https://www.dexters.co.uk)