



## Charrington Street, NW1

**£738** Per week

Located on the first and second floor of a stunning Georgian conversion, features include floor to ceiling sash windows, a re-fitted shaker style kitchen, solid wood flooring, communal garden and loft access.

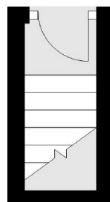
Charrington Street is a quiet, no through road located between the newly developed Coal Drops Yard at King's Cross and Camden High Street.

### Features

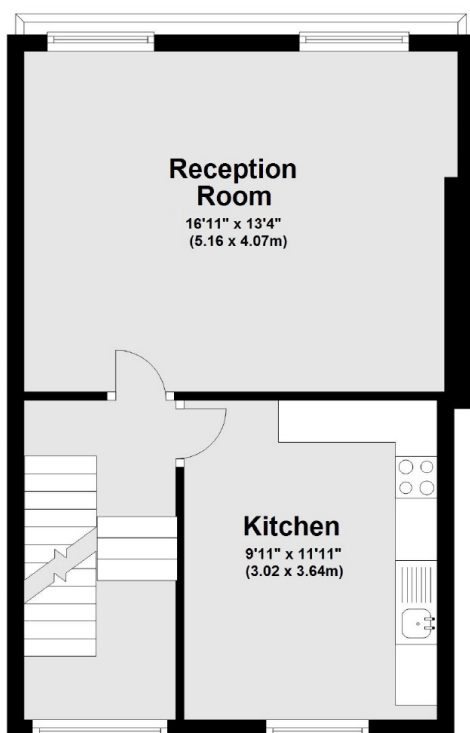
- Georgian Conversion
- Beautifully Finished
- Communal Gardens
- Loft Storage
- Close To King's Cross
- No Through Road

# Charrington Street, London, NW1

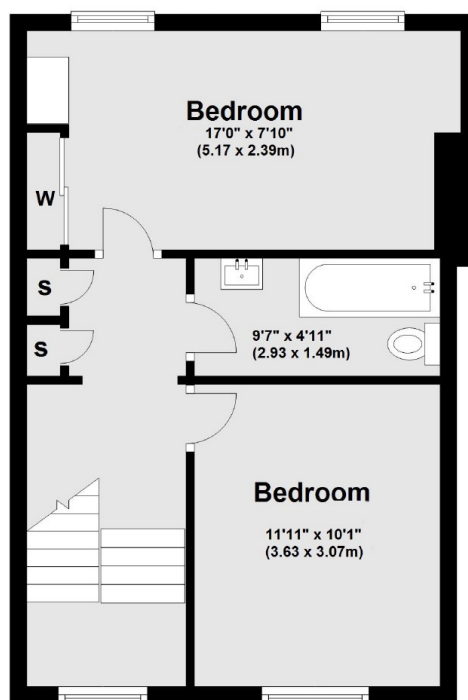
## Ground Floor



## First Floor



## Second Floor



Total Area: Approx 899sq ft - 83.56 sq m

# Dexters

Bloomsbury  
55-56 Coram Street  
London  
WC1N 1HB  
Lettings  
020 7833 4488

Energy Rating: C. We aim to make our particulars both accurate and reliable. However they are not guaranteed; nor do they form part of an offer or contract. If you require clarification on any points then please contact us, especially if you're traveling some distance to view. Please note that appliances and heating systems have not been tested and therefore no warranties can be given as to their good working order.



dexters.co.uk