



Lewis Cubitt Walk, N1C

£1,650,000

Dexters



Lewis Cubitt Walk, N1C

Presented for sale is this stylish apartment situated in Cadence, benefitting from two double bedrooms, two bathrooms and a fully integrated, open plan kitchen reception room.

The apartment is one of the best positioned in the building, with open, south and west-facing views from the reception room and balcony across Lewis Cubitt Park, and the London skyline.

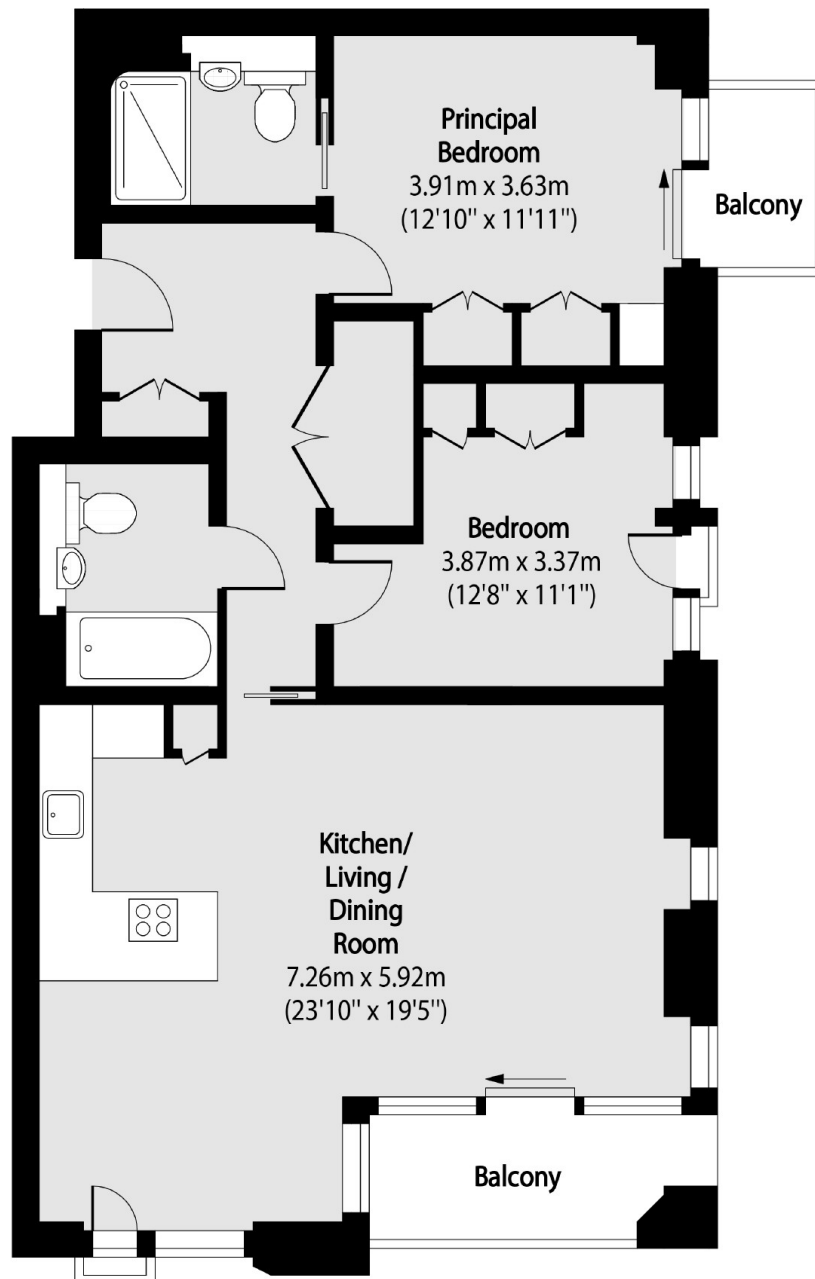
Located within Coal Drops Yard, the shopping and dining hotspot at the heart of King's Cross and overlooking the charming Lewis Cubitt Square. Soon to be home of the 11 story, one million sq ft London Google HQ.

Features

- Two Bedrooms
- Two Private Balconies
- Boutique Development
- 24 Hour concierge
- Leisure Facilities
- Residents Lounge



Lewis Cubitt Walk, London, N1C



Total area (approx): 86.18 sq m (928 sq. ft)

Balcony total area (approx): 8.49 sq m (91 sq. ft)

Dexters

Bloomsbury
55-56 Coram Street
London
WC1N 1HB
Sales
020 7833 4466

Energy Rating: B. We aim to make our particulars both accurate and reliable. However they are not guaranteed; nor do they form part of an offer or contract. If you require clarification on any points then please contact us, especially if you're traveling some distance to view. Please note that appliances and heating systems have not been tested and therefore no warranties can be given as to their good working order.

 **RICS** | Regulated
Estate Agent
and Letting Agent

[dexters.co.uk](https://www.dexters.co.uk)