

Woburn Place, WC1H

£300,000

A beautifully appointed 6th floor studio apartment set within a 1930's mansion block in the heart of Bloomsbury. The property has been refurbished to a high standard throughout and includes a re-fitted kitchen with space for a washing machine, built in storage and a bay window with recently fitted double glazing and extra acoustic protection. .

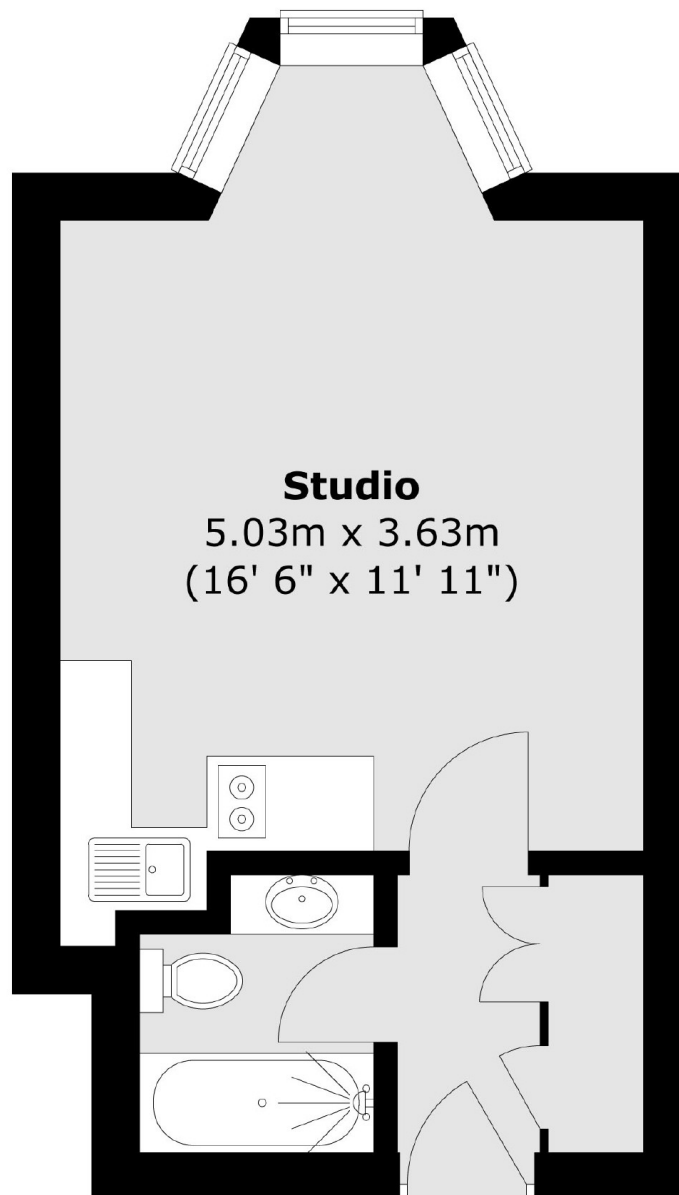
Russell Court is a purpose built mansion building moments from Russell Square & The Brunswick shopping centre which contains many well known high street shops and restaurants.

Features

- Excellent Condition
- Studio Apartment
- 24 Hr Concierge
- Lift Access
- Share Of Freehold
- No Onward Chain

Woburn Place, London, WC1H

Sixth Floor



Total area (approx.) : 23.1 sq. m (249 sq. ft)