



## Judd Street, WC1H

£299,995

A large studio apartment finished to an extremely high standard throughout. There is a spacious living area with two sash windows, floor to ceiling storage and a bathroom suite with walk-in shower. The contemporary kitchen includes quartz worktops and integrated Smeg appliances, finished in American black walnut.

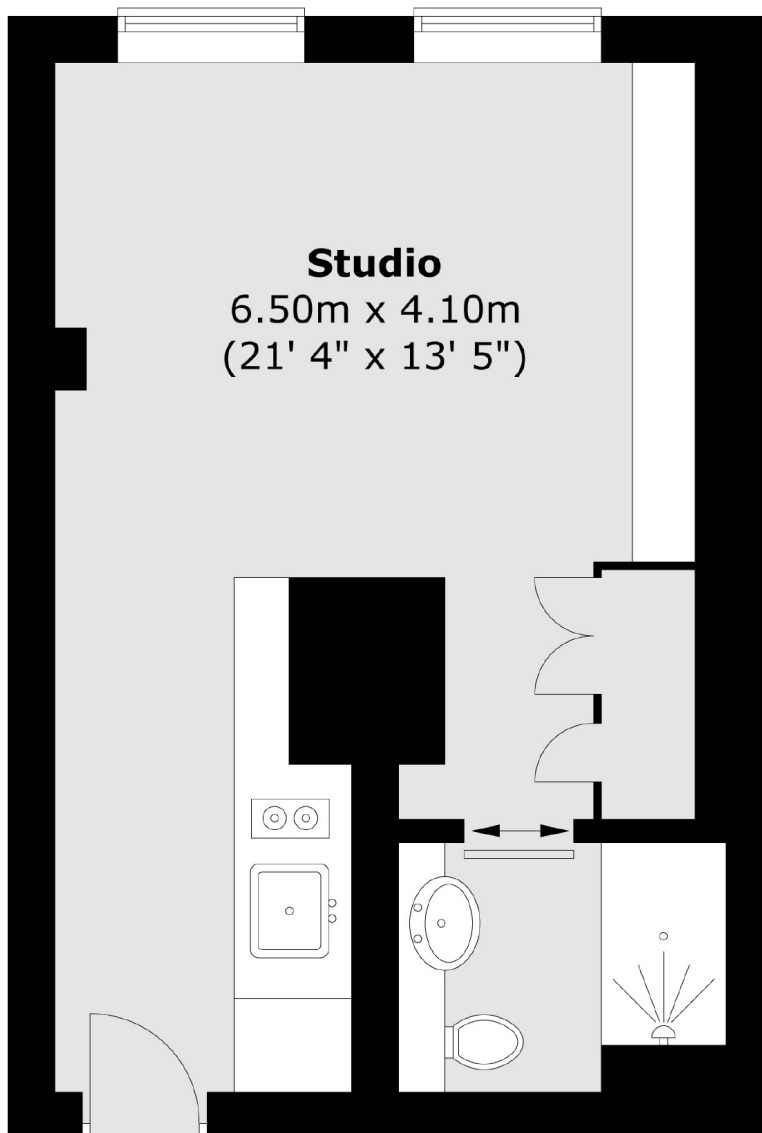
Nestled in the heart of Bloomsbury, Albany House occupies a prominent position on the corner of Judd Street and Tavistock Place, WC1. There are independent cafés, restaurants and high-street amenities nearby including a Waitrose within the Brunswick Centre.

### Features

- Pristine Condition
- Studio Apartment
- Prime Central Location
- Excellent Amenities
- Share Of Freehold
- No Onward Chain

Judd Street,  
London, WC1H

## Lower Ground Floor



Total area (approx.) : 27.5 sq. m (296 sq. ft)