



Woburn Place, WC1H

£275,000

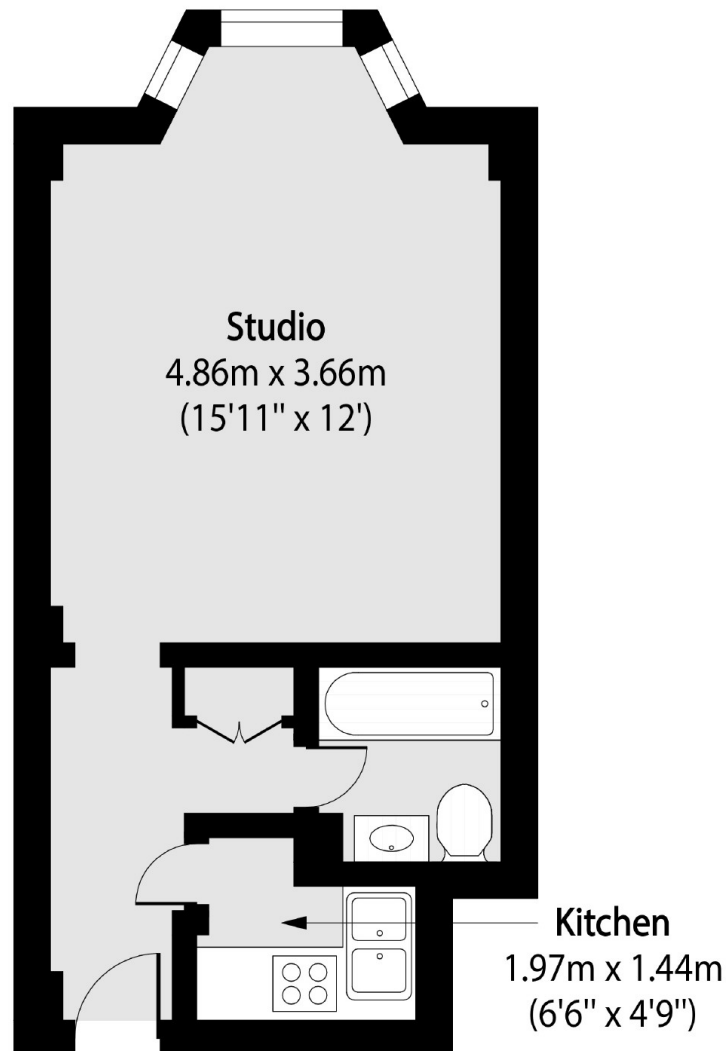
This spacious studio flat is located on the fifth floor of the newly renovated Russell Court, a 1930s mansion block with 24-hour porter service and three lifts. The property includes a bright, west-facing living/bedroom area with a bay window, a separate kitchen, and a family bathroom. (The heating & water costs are covered by the annual service charge).

Russell Court occupies a prominent position within Bloomsbury in central London which offers excellent transport links and good access to top restaurants, bars, shopping and Universities.

Features

- Studio Apartment
- Share of Freehold
- Separate Kitchen
- 24 hour Concierge
- Lift Access
- No Onward Chain

Woburn Place, London, WC1H



Total area (approx): 26.91 sq m (290 sq. ft)