



Great Russell Street, WC1B

£900,000

A three double bedroom home nestled in one of London's most iconic locations. The property occupies the top floor and is configured as three bedrooms, two bathrooms, a separate living room and kitchen as well as a south facing balcony and high ceilings. There are views from the living room of the iconic British Museum.

Located opposite the world renowned British Museum on Great Russell Street, the property is in the heart of London's West End and theatre district. Amenities are aplenty as well as access to multiple underground lines.

Features

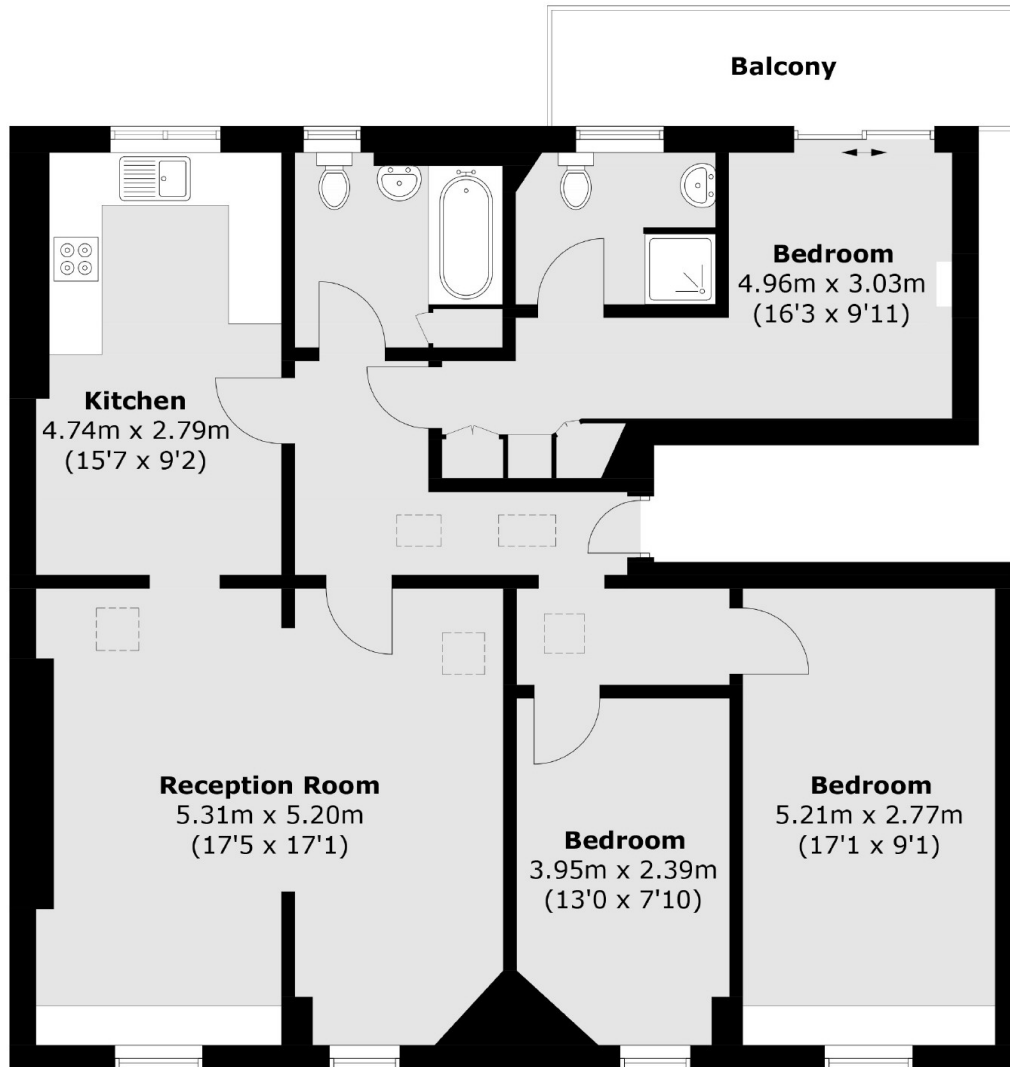
- Top Floor Apartment
- Overlooking British Museum
- 1100 Sq Ft
- Three Bedrooms
- Private Balcony
- No Onward Chain



Great Russell Street, WC1B



Great Russell Street,
London, WC1B



Total area (approx.): 101.5 sq. m (1,092.5 sq. ft)
Balcony area : 7.0 sq. m (75.3 sq. ft)

Dexters

Bloomsbury
55-56 Coram Street
London
WC1N 1HB
Sales
020 7833 4466

Energy Rating: D. We aim to make our particulars both accurate and reliable. However they are not guaranteed; nor do they form part of an offer or contract. If you require clarification on any points then please contact us, especially if you're traveling some distance to view. Please note that appliances and heating systems have not been tested and therefore no warranties can be given as to their good working order.

 **RICS** | Regulated
Estate Agent
and Letting Agent

dexters.co.uk