



Judd Street, WC1H

£735 Per week

Dexters



Judd Street, WC1H

A newly refurbished two bedroom apartment comprising two bedrooms, separate living room, a contemporary eat in kitchen and a beautifully appointed bathroom. This bright apartment on the 4th floor of a 6th storey building (with a Lift) benefits from underfloor heating throughout (which can be controlled via Wi-Fi) and dimmable lighting. The kitchen features modern appliances including a full size fridge freezer, dishwasher, pyrolytic (self-cleaning) oven and a washing machine.

Both bedrooms, the living room and kitchen all benefit from large windows creating an abundance of natural light. The rustic wooden parquet flooring throughout creates a homely and easy to live with feel. The property is furnished with a King size bed (with under drawer storage) in the main bedroom and a compact kitchen table and chairs available.

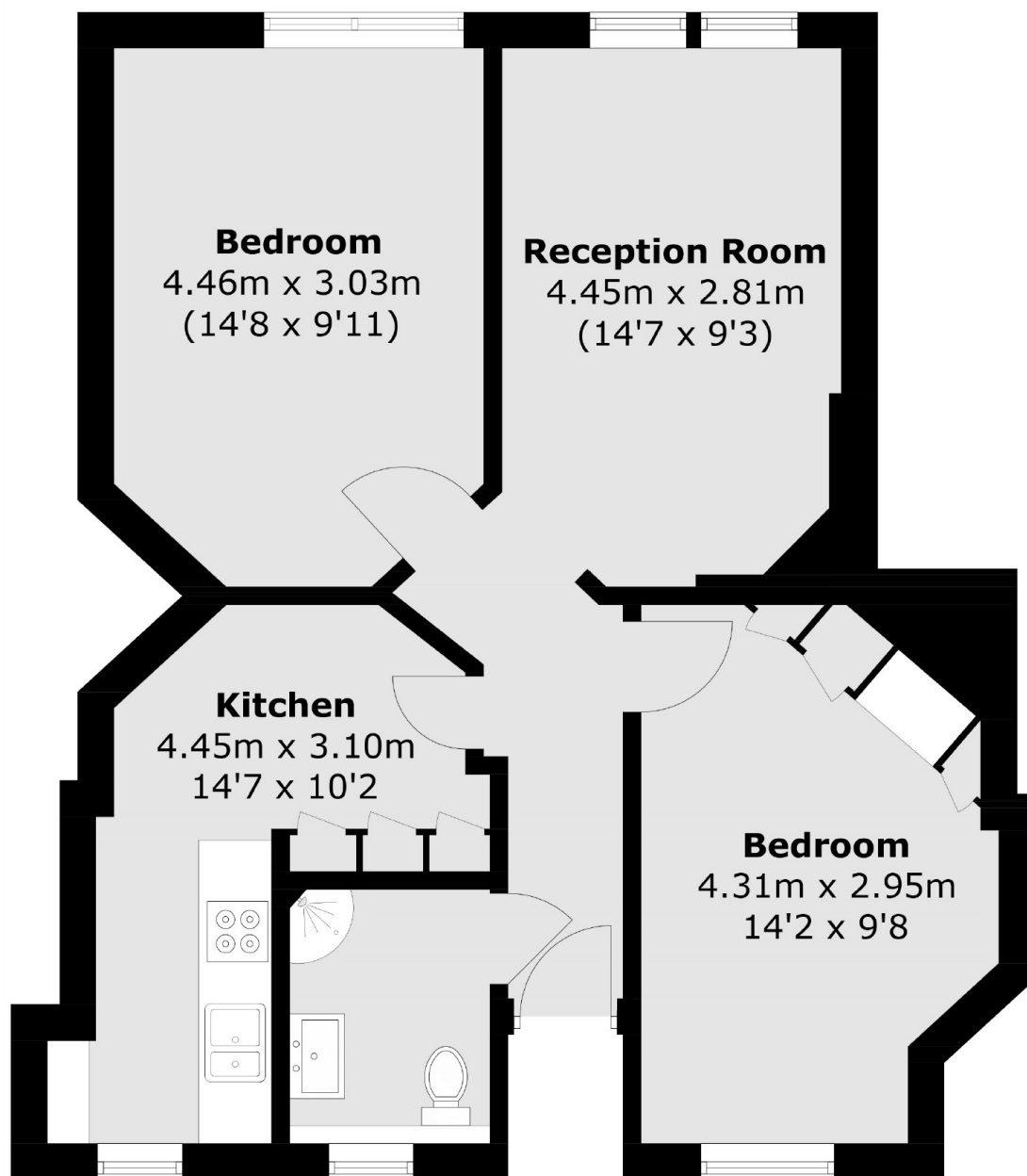
Jessel House is a red brick mansion block located a short walk away from Kings Cross & St Pancras, Euston and Russell Square stations making it perfect for those who want to be in the hub of Bloomsbury with transport links on their doorstep. There are plenty of green squares nearby along with a Waitrose and a cinema at the nearby Bloomsbury Centre.

Features

- Recently Refurbished
- Two Double Bedrooms
- Prime Location
- Bike Storage
- Lift Access
- Furnished



Judd Street, London, WC1H



Total area (approx.): 56.7 sq. m (610.3 sq. ft)