



John Adam Street, WC2N
£1,500,000

Dexters



John Adam Street, WC2N

A well presented, three double bedroom home located between the Strand and Embankment. There is a bright dual aspect living room with access to the separate kitchen, two bathrooms, a WC and a private balcony facing the rear of the building.

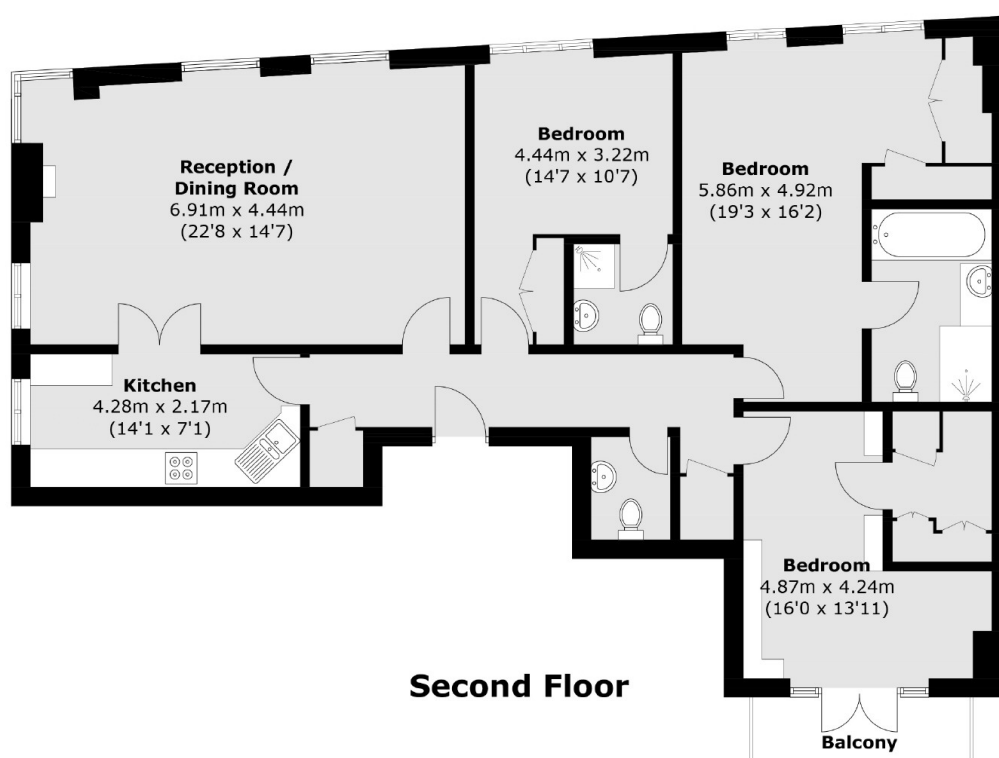
John Adam Street is situated just south of the Strand, within walking distance of Parliament, the law courts, the serene Embankment Gardens, the River Thames, and the vibrant Covent Garden Piazza, known for its boutique shops, designer stores, bars, and restaurants. Covent Garden, Charing Cross, and Embankment stations are also nearby, offering excellent transport links throughout the city.

Features

- Three Double Bedrooms
- Lift Access
- Underground Parking
- Share Of Freehold
- 1237 Sq Ft
- No Onward Chain



John Adam Street, London, WC2N



Total area (approx.): 115.0 sq. m (1,237.8 sq. ft)
Balcony: 3.5 sq. m (37.6 sq. ft)