

## Warwick Court, WC1R

### £900,000

The property attracts natural light through the three sash windows in the living room/kitchen as well as the two glazed doors providing access to the outside terrace. There is an en-suite along with a separate WC and the flat can be accessed via stairs and a lift.

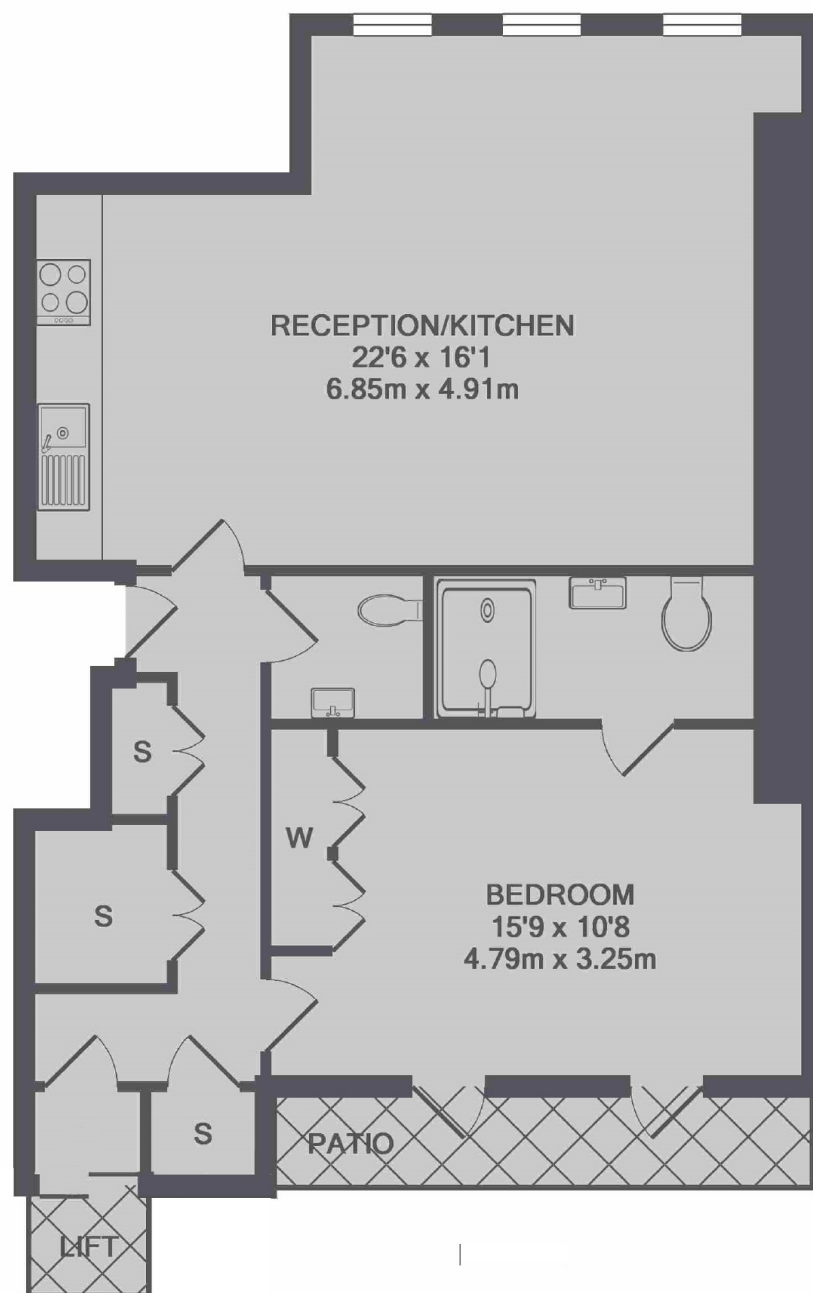
The property has undergone complete restoration and re-modelling and the finish is on par with the best the West End has to offer. As well as original period features the property blends well incorporating modern day technology and conveniences.

Warwick Court is positioned just east of bustling Covent Garden located between the tranquil green spaces of Lincoln's Inn fields and Gray's Inn Gardens. The area is surrounded by a variety of popular restaurants, bars, cafés and famous theatres.

### Features

- Period Conversion
- Direct Lift Access
- En-Suite and WC
- Private Terrace
- Long Lease
- No Onward Chain

# Warwick Court, London, WC1R



TOTAL APPROX. FLOOR AREA 657 SQ.FT. (61.0 SQ.M.)

## Dexters

Bloomsbury  
55-56 Coram Street  
London  
WC1N 1HB  
Sales  
020 7833 4466

Energy Rating: B. We aim to make our particulars both accurate and reliable. However they are not guaranteed; nor do they form part of an offer or contract. If you require clarification on any points then please contact us, especially if you're traveling some distance to view. Please note that appliances and heating systems have not been tested and therefore no warranties can be given as to their good working order.

 **RICS** | Regulated  
Estate Agent  
and Letting Agent

[dexters.co.uk](https://www.dexters.co.uk)