

## Hatton Garden, EC1N

£1,500,000

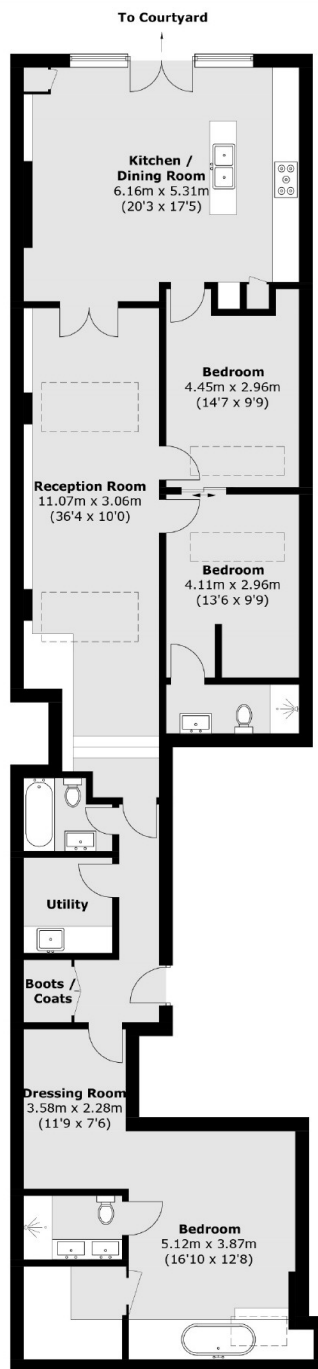
This fully refurbished warehouse-style home offers a blend of modern finishes and industrial character. The property features three spacious double bedrooms, two with en-suite bathrooms, a separate living area and double doors opening to a fully integrated kitchen with fitted appliances and quartz worktops. A private patio provides outdoor space for relaxation or entertaining. Thoughtfully renovated, the home combines contemporary comfort with stylish warehouse features.

Hatton Garden, London's historic jewelry district, is known for its diamond traders, independent boutiques, and rich heritage. The area offers a mix of period architecture, modern offices, and vibrant dining spots, with excellent transport links and a central location near Farringdon and Chancery Lane.

### Features

- 999 Year Lease
- Warehouse Style
- Excellent Finish Throughout
- Three Double Bedrooms
- NEFF Kitchen Appliances
- Air Ventilation System

# Hatton Garden, London, EC1N



**Lower Ground Floor**

Total area (approx.): 147.0 sq. m (1,582.3 sq. ft)

## Dexters

Bloomsbury  
55-56 Coram Street  
London  
WC1N 1HB  
Sales  
020 7833 4466

Energy Rating: C. We aim to make our particulars both accurate and reliable. However they are not guaranteed; nor do they form part of an offer or contract. If you require clarification on any points then please contact us, especially if you're traveling some distance to view. Please note that appliances and heating systems have not been tested and therefore no warranties can be given as to their good working order.

 **RICS** | Regulated  
Estate Agent  
and Letting Agent

[dexters.co.uk](https://www.dexters.co.uk)