



Woburn Place, WC1H

£285,000

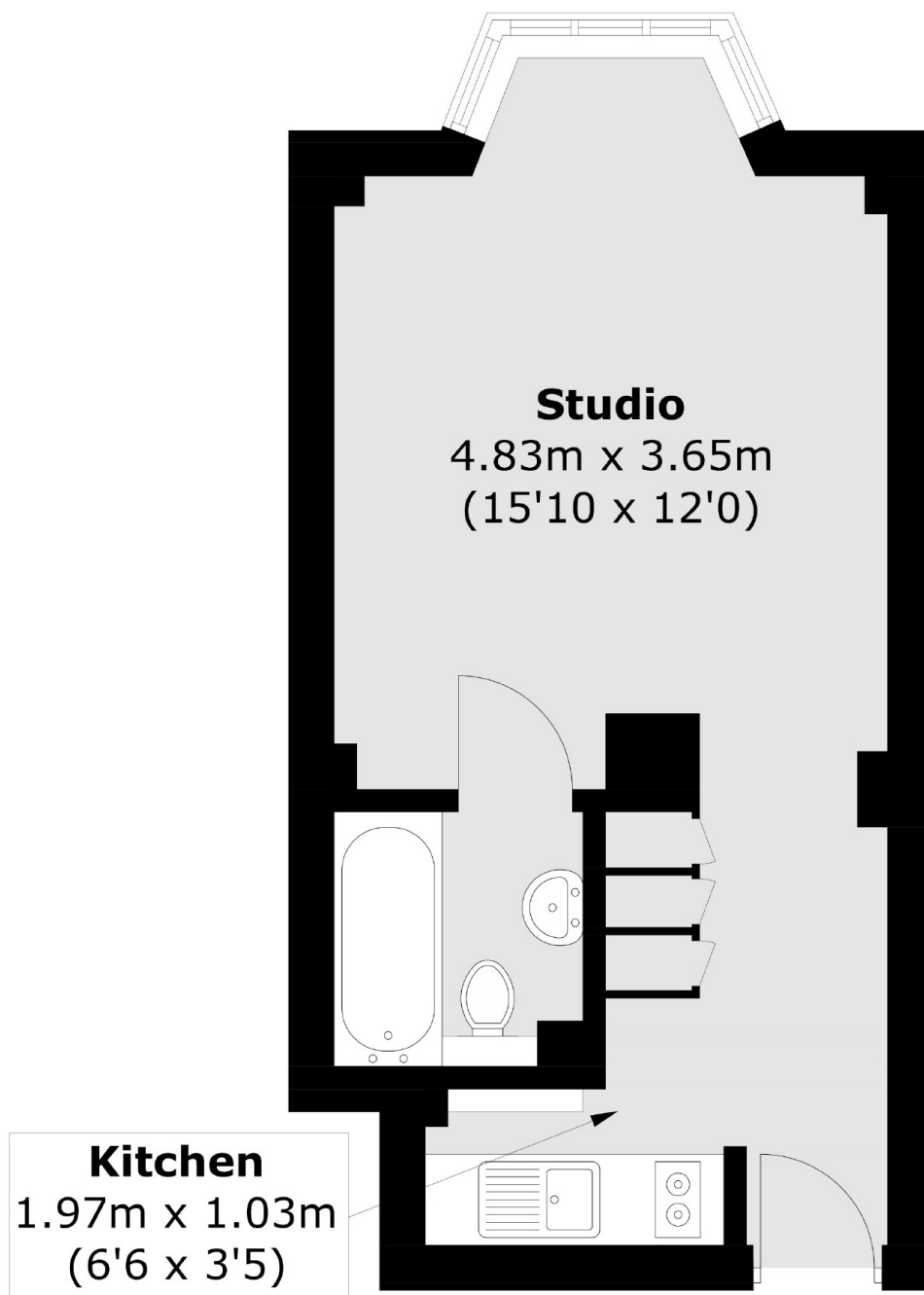
A spacious and bright west-facing studio situated in a 1930's mansion block. The property features a separate kitchen, large bathroom, and open plan living/ bedroom area. The flat itself has ample storage and a bay window with double glazing.

Located just moments from Russell Square tube station and the Brunswick Centre with a Waitrose supermarket as well as many shops and restaurants. The West End and the Eurostar terminal at St Pancras are less than half a mile away as well and UCL, SOAS and LSE are close by.

Features

- Prime Location
- Studio Apartment
- Share Of Freehold
- 24 Hr Porter
- Lift Access
- No Onward Chain

Woburn Place, London, WC1H



Total area (approx.): 26.3 sq. m (283.1 sq. ft)

Dexters

Bloomsbury
55-56 Coram Street
London
WC1N 1HB
Sales
020 7833 4466

Energy Rating: C. We aim to make our particulars both accurate and reliable. However they are not guaranteed; nor do they form part of an offer or contract. If you require clarification on any points then please contact us, especially if you're traveling some distance to view. Please note that appliances and heating systems have not been tested and therefore no warranties can be given as to their good working order.

 **RICS** | Regulated
Estate Agent
and Letting Agent

[dexters.co.uk](https://www.dexters.co.uk)