



Tavistock Square, WC1H
£995,000

Dexters



Tavistock Square, WC1H

A beautifully refurbished two double bedroom home set within an exclusive mansion block overlooking Tavistock Square. There is an open plan kitchen/living room with integrated appliances, fitted wardrobe space in each bedroom and lift access. Tavistock Court also enjoys a day porter as well as communal heating and hot water.

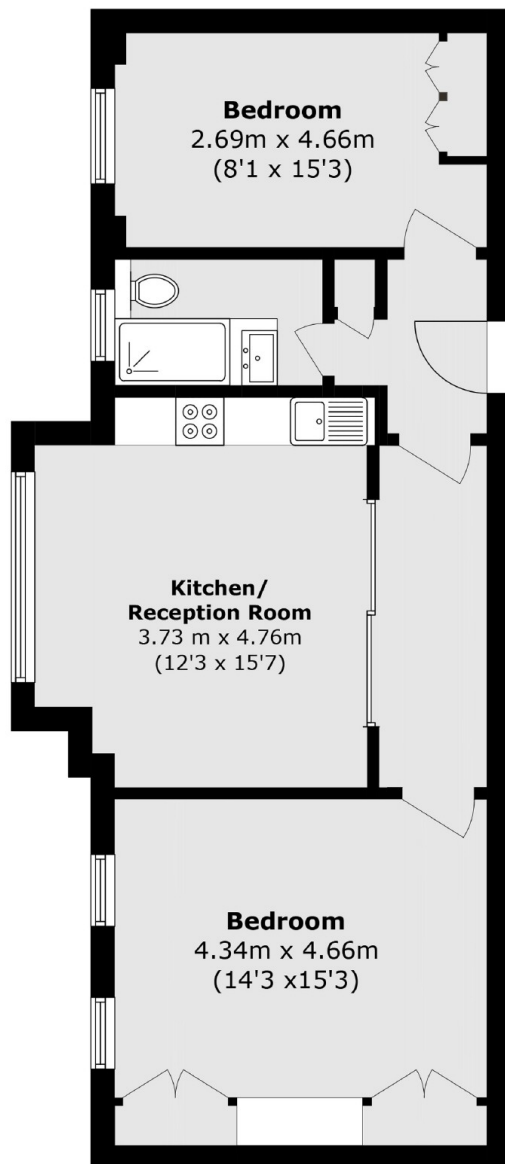
Tavistock Court is located a short walk from Russell Square tube station and close to the local shops and restaurants of the Brunswick Centre and Marchmont Street. UCL is also located a short walk away.

Features

- Two Double Bedrooms
- Excellent Condition
- Lift Access
- Overlooking Tavistock Square
- 187 Year Lease
- No Onward Chain



Tavistock Square, London, WC1H



Total area (approx.): 68.4 sq. m (736.2 sq. ft)