



Rodney Street, N1

£700,000

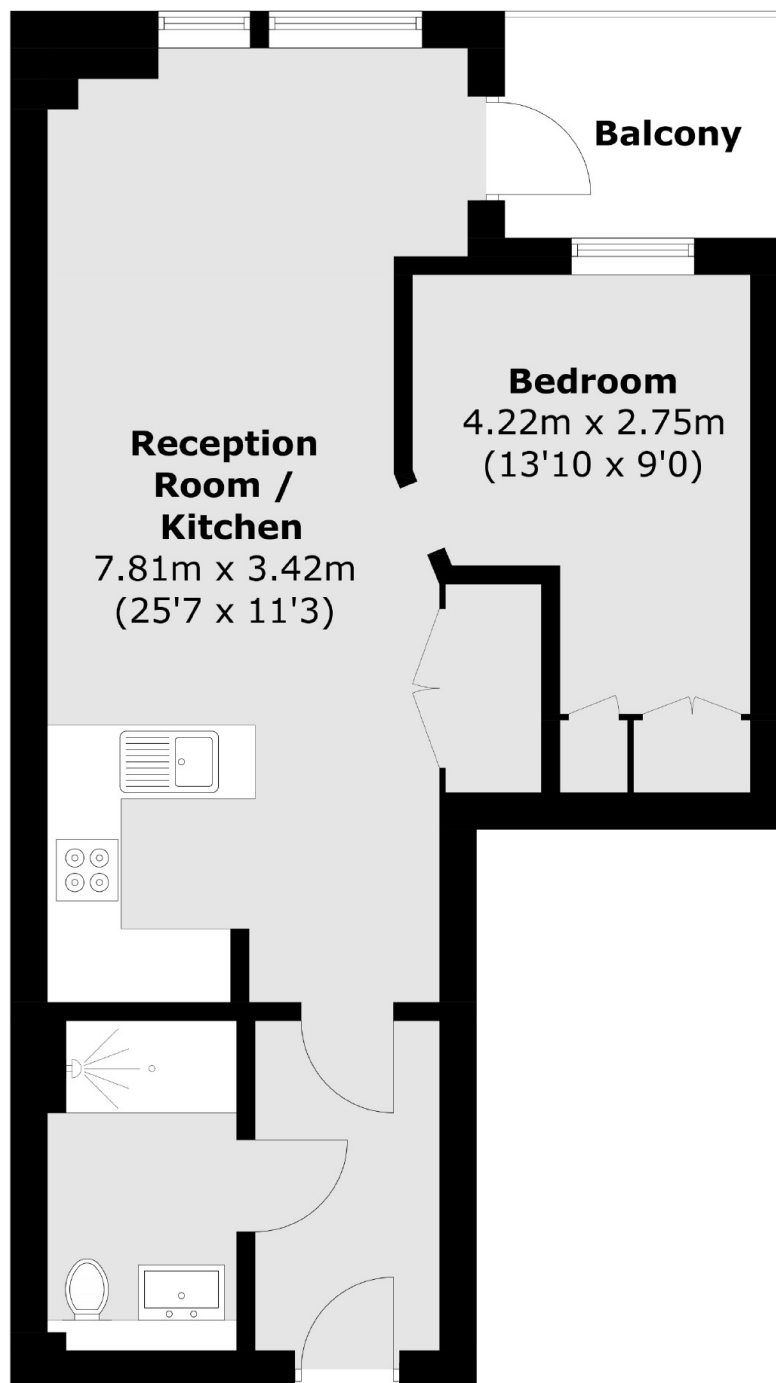
A beautifully appointed one double bedroom home set within a secure private development close to King's Cross. There is an open-plan kitchen/living room, fitted wardrobes, a private balcony and access to a 24 hour concierge and leisure facilities.

Emerson Court enjoys a prime location with easy access to Angel, Shoreditch, and Clerkenwell. Excellent transport links are available at Angel and King's Cross, offering Eurostar, National Rail, and Underground services.

Features

- One Double Bedroom
- Private Balcony
- Swimming Pool
- 24hr Concierge
- Spa and Gym Facilities
- Cinema Room

Rodney Street, London, N1



Total area (approx.): 45.2 sq. m (486.5 sq. ft)
Balcony area (approx.): 4.0 sq. m (43.0 sq. ft)

Dexters

Bloomsbury
55-56 Coram Street
London
WC1N 1HB
Sales
020 7833 4466

Energy Rating: B. We aim to make our particulars both accurate and reliable. However they are not guaranteed; nor do they form part of an offer or contract. If you require clarification on any points then please contact us, especially if you're traveling some distance to view. Please note that appliances and heating systems have not been tested and therefore no warranties can be given as to their good working order.

 **RICS** | Regulated
Estate Agent
and Letting Agent

[dexters.co.uk](https://www.dexters.co.uk)