



Woburn Place, WC1H

£325,000

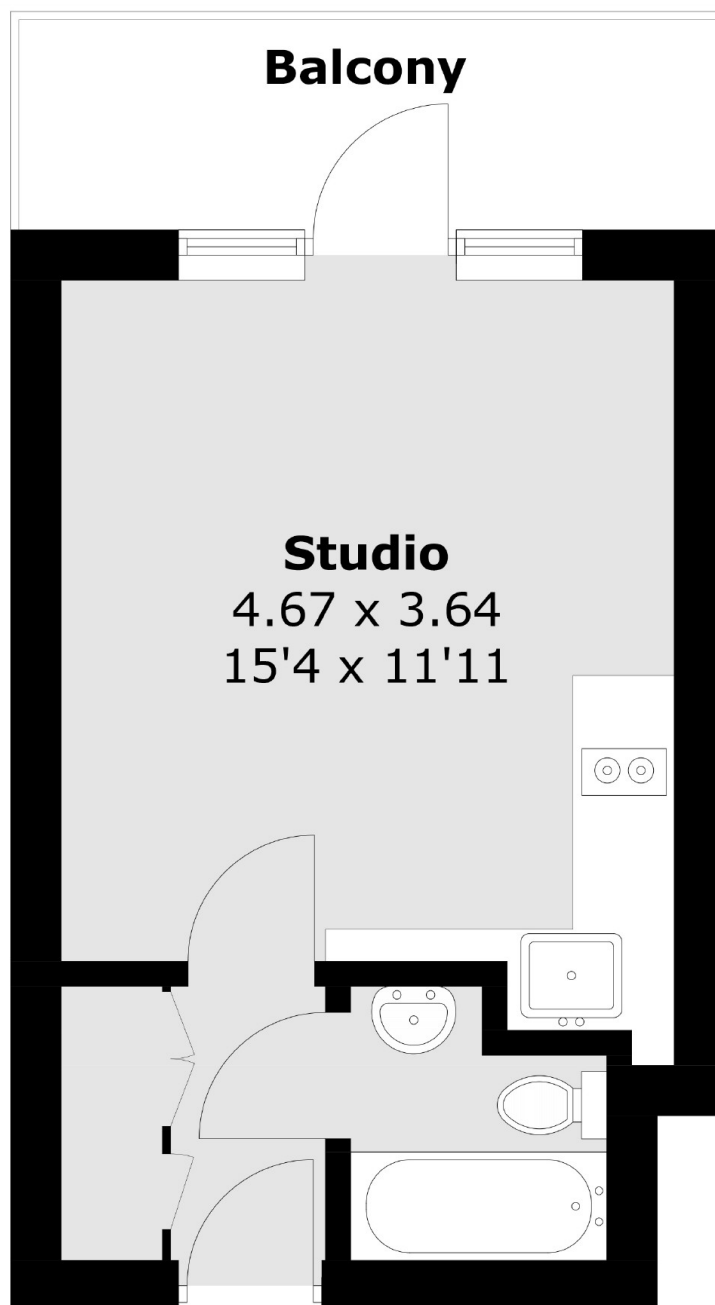
A beautifully appointed 8th floor studio apartment with built in storage, an open-plan kitchen, lift access and its own west facing private balcony. The property owns a share of the freehold and a 24 hour concierge.

Russell Court is a purpose built mansion building moments from Russell Square & The Brunswick shopping centre which contains many well known high street shops and restaurants.

Features

- West Facing Balcony
- Excellent Condition
- Studio Apartment
- Share Of Freehold
- 24 Hour Concierge
- No Onward Chain

Woburn Place, London, WC1H



Total area (approx.): 21.0 sq. m (226.0 sq. ft)
Balcony area: 5.2 sq. m (55.9 sq. ft)

Dexters

Bloomsbury
55-56 Coram Street
London
WC1N 1HB
Sales
020 7833 4466

Energy Rating: C. We aim to make our particulars both accurate and reliable. However they are not guaranteed; nor do they form part of an offer or contract. If you require clarification on any points then please contact us, especially if you're traveling some distance to view. Please note that appliances and heating systems have not been tested and therefore no warranties can be given as to their good working order.

 **RICS** | Regulated
Estate Agent
and Letting Agent

[dexters.co.uk](https://www.dexters.co.uk)