



## Orde Hall Street, WC1N

### £650,000

This charming two-bedroom period property, perfectly situated and available with no onward chain. This apartment benefits from high ceilings, a separate kitchen and the large windows that floods the reception room with natural light. With low service charges, this property is not only a lovely place to live but also an affordable one.

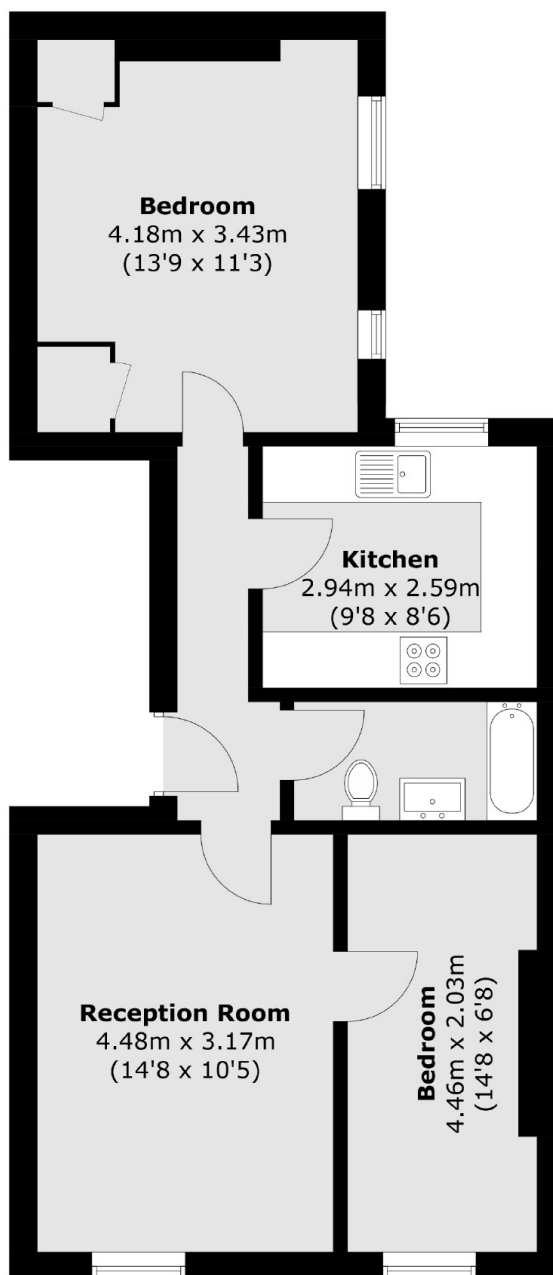
The property retains its period charm with elegant details that pay homage to its history, making it a delightful blend of comfort and style.

Orde Hall Street area is known for its academic institutions, including University College London (UCL) and the British Museum, as well as a variety of cultural and historical sites. Bloomsbury is characterised by its garden squares, literary history, and vibrant atmosphere, making it a notable part of London. The street is ideally located near Russell Square station which allows for great access across central London.

### Features

- Central Location
- No Onward Chain
- Period Property
- Two Bedroom
- Low Service Charge
- High Ceilings

# Orde Hall Street, London, WC1N



Total area (approx.): 54.8 sq. m (589.8 sq. ft)

## Dexters

Bloomsbury  
55-56 Coram Street  
London  
WC1N 1HB  
Sales  
020 7833 4466

Energy Rating: E. We aim to make our particulars both accurate and reliable. However they are not guaranteed; nor do they form part of an offer or contract. If you require clarification on any points then please contact us, especially if you're traveling some distance to view. Please note that appliances and heating systems have not been tested and therefore no warranties can be given as to their good working order.

 **RICS** | Regulated  
Estate Agent  
and Letting Agent

[dexters.co.uk](https://www.dexters.co.uk)