



## Balfe Street, N1

£675,000

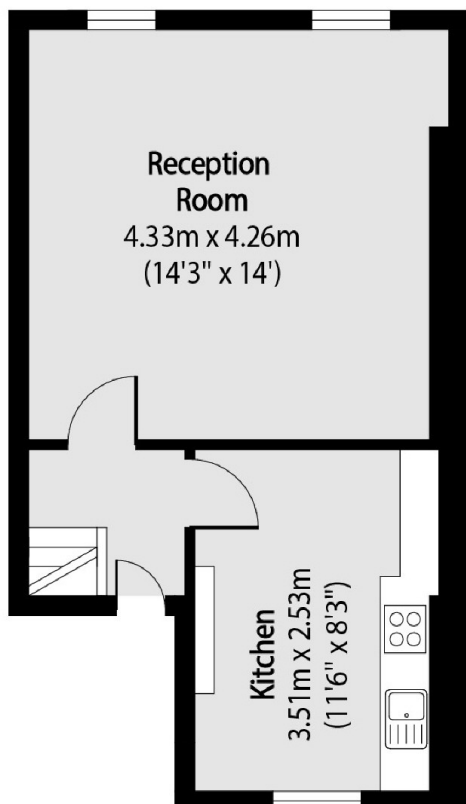
A charming two bedroom split level home with a generous living room, in a quiet and historic street within walking distance of King's Cross Station. There is a good sized living room with sash windows, a separate kitchen and two double bedrooms, the property also has the potential for on-street parking.

Balfe Street is tucked away within King's Cross and provides excellent access to transport, Coal Drops Yard and the West End.

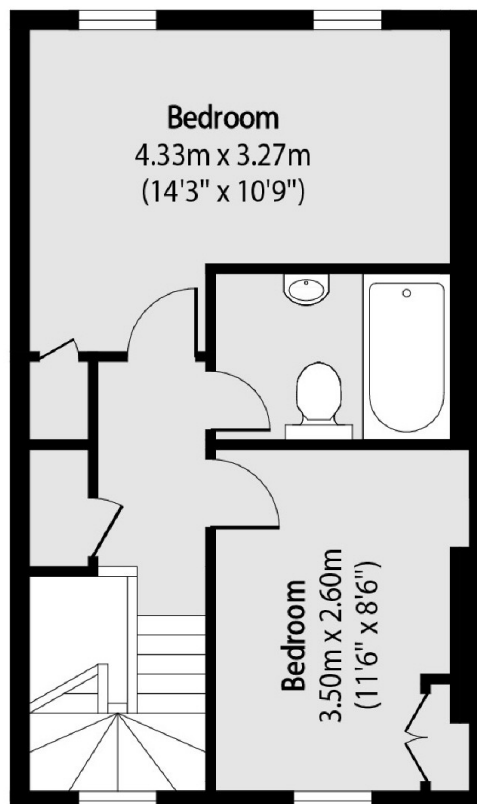
### Features

- Two Bedrooms
- First Floor
- Quiet Street
- Split Level
- Parking Available
- Excellent Transport Links

# Balfe Street, London, N1



First Floor



Second Floor

Total area (approx): 63.50 sq m (684 sq. ft)