



**Gray's Inn Road, WC1X**  
**£1,100,000**

**Dexters**



## Gray's Inn Road, WC1X

A beautifully appointed two double bedroom home within a secure modern development with lift access and concierge. There is a private south facing terrace, fitted bedroom storage and a fully integrated modern kitchen.

The Lincolns is situated on the border of Bloomsbury and Clerkenwell offering easy access to the West End, Farringdon (Crossrail) and King's Cross St Pancras. Lamb's Conduit Street is nearby with its boutique shops and plenty of places to eat and drink.

### Features

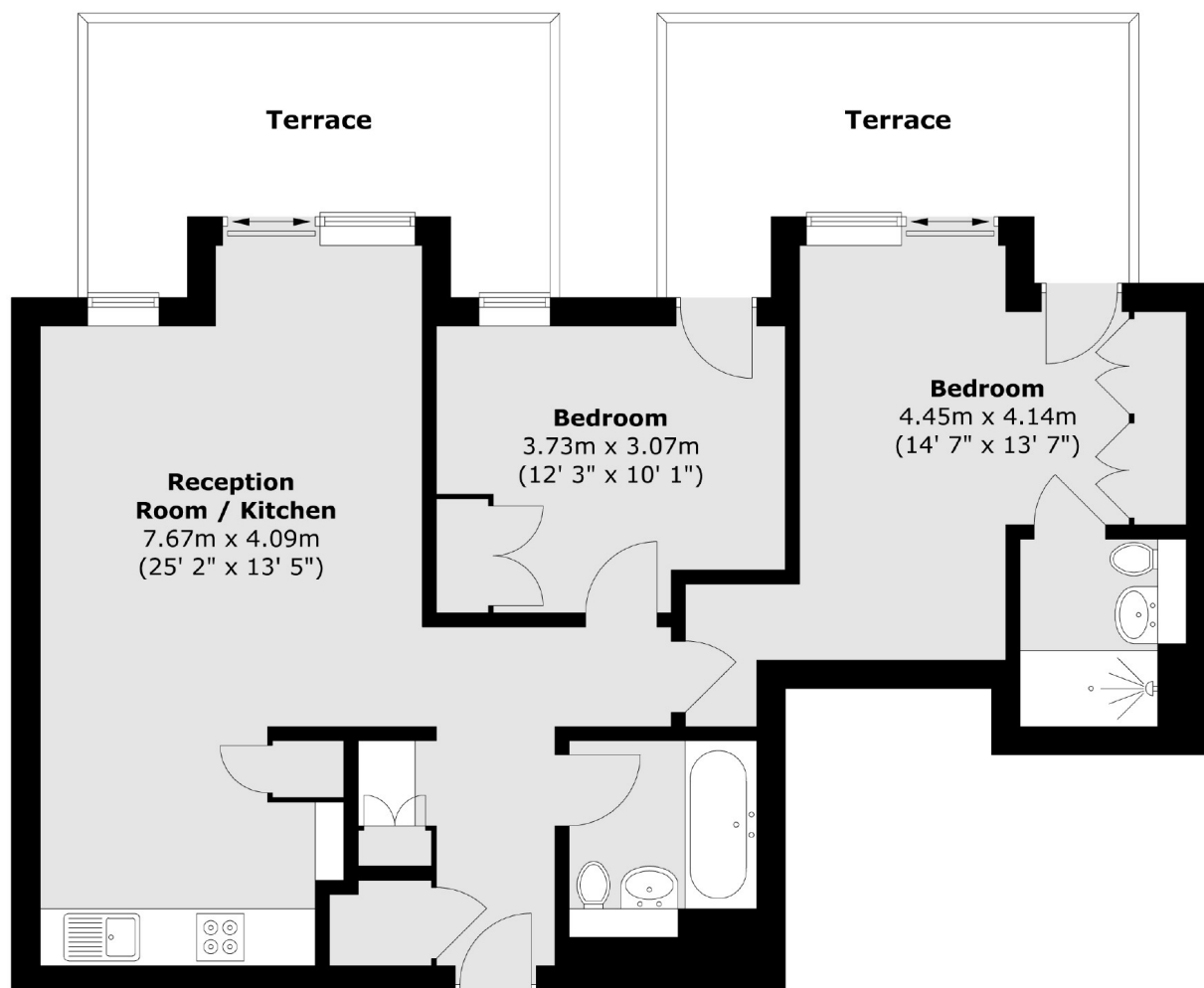
- Private Terrace
- Two Bathrooms
- Concierge
- Two Double Bedrooms
- Lift Access
- No Onward Chain





# Gray's Inn Road, London, WC1X

## First Floor



Total area (approx.) : 75.4 sq. m (811 sq. ft)  
Total terrace area (approx.) : 21.9 sq. m (236 sq. ft)