



Gray's Inn Road, WC1X
£1,050,000

Dexters



Gray's Inn Road, WC1X

A beautifully appointed two double bedroom home within a secure modern development with lift access and concierge. There is a private south facing terrace, fitted bedroom storage and a fully integrated modern kitchen.

The Lincolns is situated on the border of Bloomsbury and Clerkenwell offering easy access to the West End, Farringdon (Crossrail) and King's Cross St Pancras. Lamb's Conduit Street is nearby with its boutique shops and plenty of places to eat and drink.

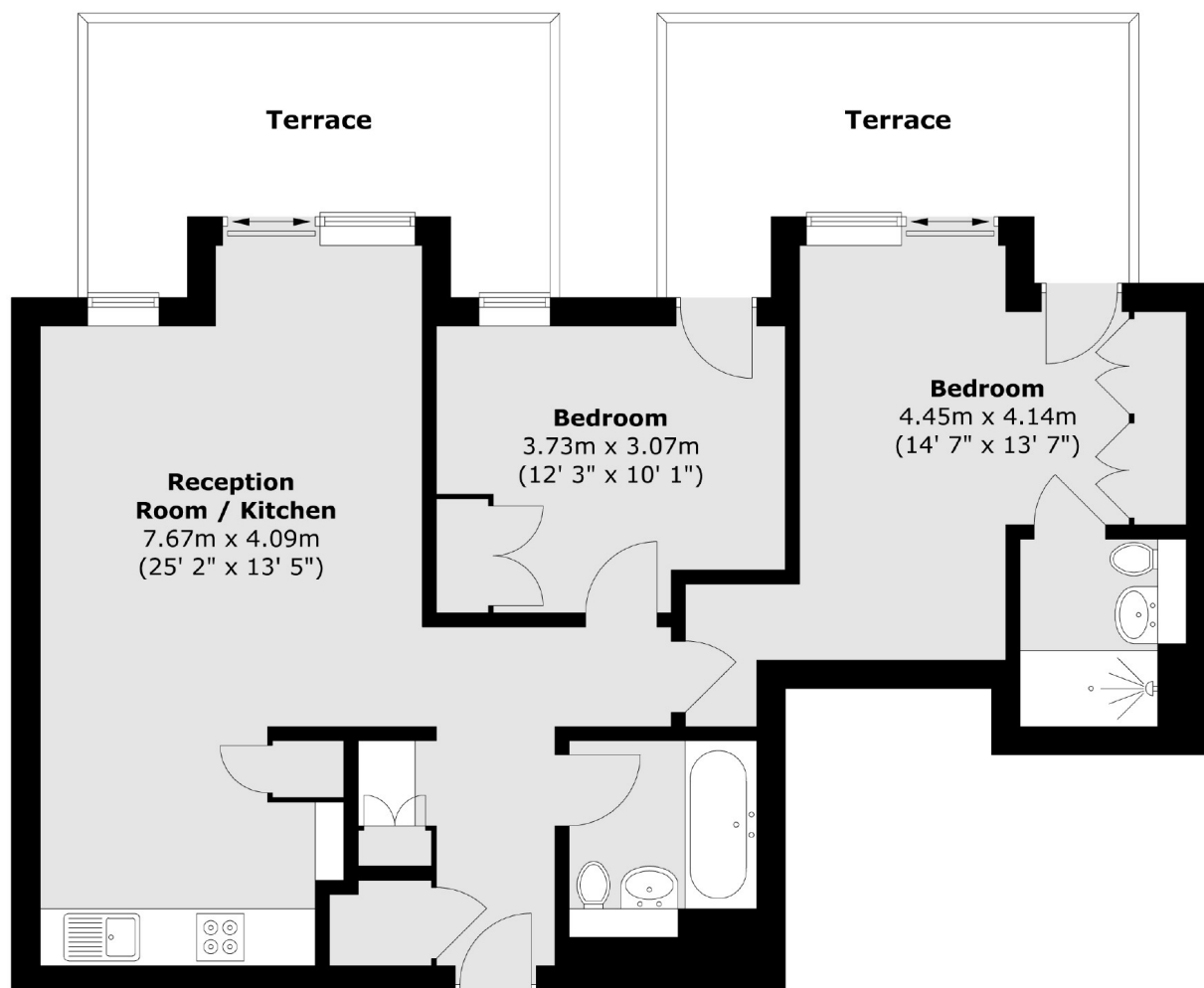
Features

- Private Terrace
- Two Bathrooms
- Concierge
- Two Double Bedrooms
- Lift Access
- No Onward Chain



Gray's Inn Road, London, WC1X

First Floor



Total area (approx.) : 75.4 sq. m (811 sq. ft)
Total terrace area (approx.) : 21.9 sq. m (236 sq. ft)

Dexters

Bloomsbury
55-56 Coram Street
London
WC1N 1HB
Sales
020 7833 4466

Energy Rating: B. We aim to make our particulars both accurate and reliable. However they are not guaranteed; nor do they form part of an offer or contract. If you require clarification on any points then please contact us, especially if you're traveling some distance to view. Please note that appliances and heating systems have not been tested and therefore no warranties can be given as to their good working order.

 **RICS** | Regulated
Estate Agent
and Letting Agent

dexters.co.uk