



## Southampton Row, WC1B

### £850,000

Introducing this elegant, well proportioned two bedroom apartment located in the heart of Bloomsbury. Situated in a highly sought after and very well maintained Victorian mansion block on the famous Southampton Row, it retains the period features you would expect to find. This includes high ceilings, original wood flooring and gorgeous period fireplaces.

The property also offers private access to the beautiful Bedford Square Gardens nearby, a lovely and secluded space to sit and relax.

Situated just minutes from Russell Square and Holborn Underground Station, the apartment is only a short stroll from all the local amenities of Clerkenwell and Bloomsbury. The rest of West End is also within walking distance, as are the stations of Euston and Kings Cross-St. Pancras, serving the national and international commute.

### Features

- Period Block
- No Onward Chain
- Long Lease
- High Ceilings
- Lift Access
- Transport Links Nearby



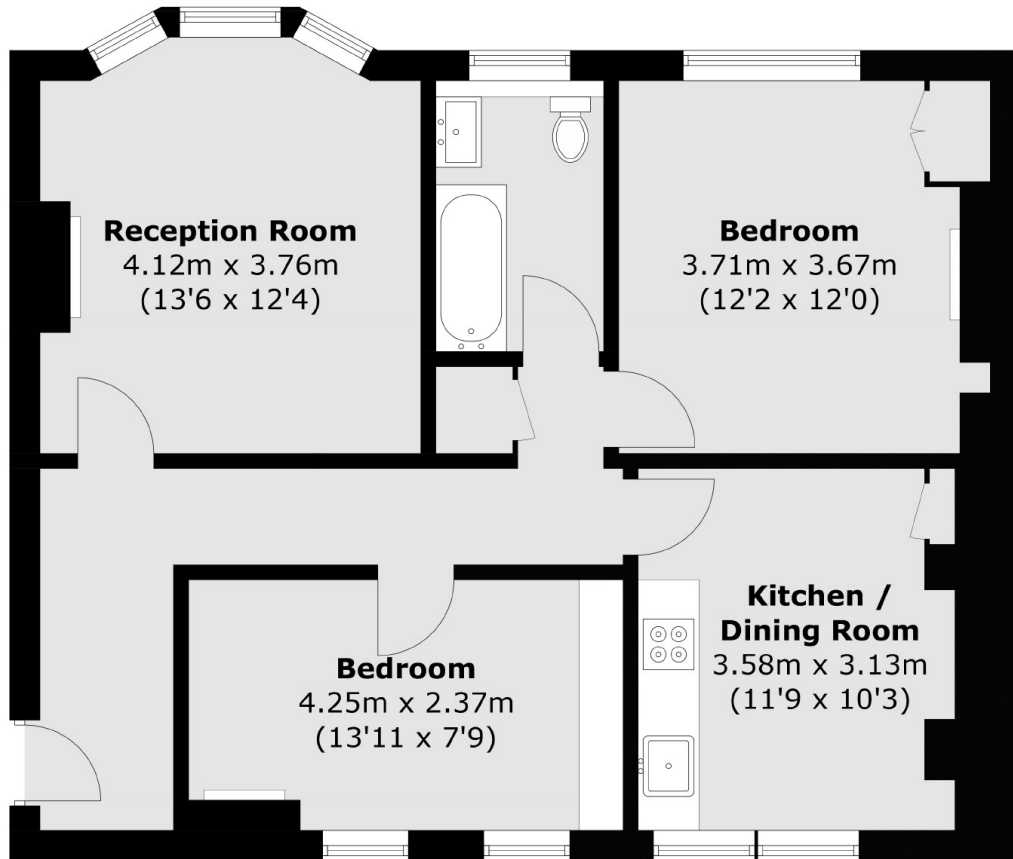


**Southampton Row, WC1B**





# Southampton Row, London, WC1B



Total area (approx.): 69.3 sq. m (745.9 sq. ft)

## Dexters

Bloomsbury  
55-56 Coram Street  
London  
WC1N 1HB  
Sales  
020 7833 4466

Energy Rating: D. We aim to make our particulars both accurate and reliable. However they are not guaranteed; nor do they form part of an offer or contract. If you require clarification on any points then please contact us, especially if you're traveling some distance to view. Please note that appliances and heating systems have not been tested and therefore no warranties can be given as to their good working order.

 **RICS** | Regulated  
Estate Agent  
and Letting Agent

[dexters.co.uk](https://www.dexters.co.uk)