



## Leigh Street, WC1H

### £775,000

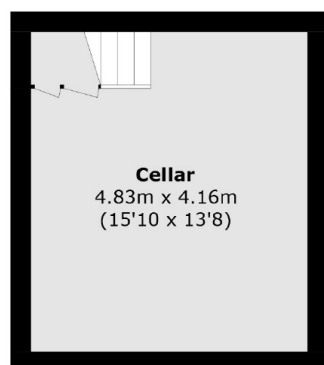
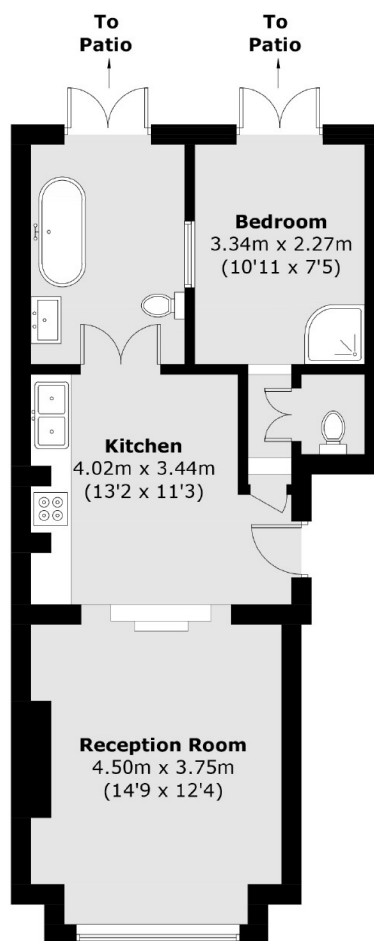
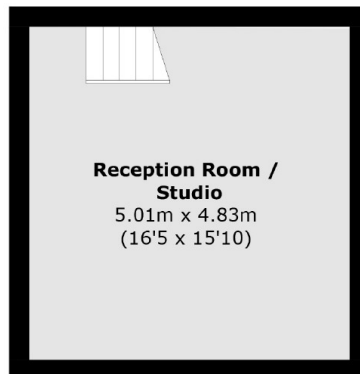
This exceptional versatile apartment is configured across the ground and lower ground floors of a former shop on Leigh Street Bloomsbury. With over 1,000 sq ft of living space, there are two double bedrooms, two bathrooms and an additional living/work space.

Leigh Street is set in the heart of Bloomsbury and offers everything from independent cafés to High Street chains within The Brunswick Centre. The nearest tube station is Russell Square, and King's Cross is less than a quarter mile away.

### Features

- Two Double Bedrooms
- Private Outside Space
- Over 1,000 SQFT
- No Onward Chain
- Excellent Location
- Share of Freehold

# Leigh Street, London, WC1H



**Cellar**

**Ground Floor**

Total area (approx.): 93.7 sq. m (1008.5 sq. ft)  
(Including Cellar)