



New Wharf Road, N1

£800,000

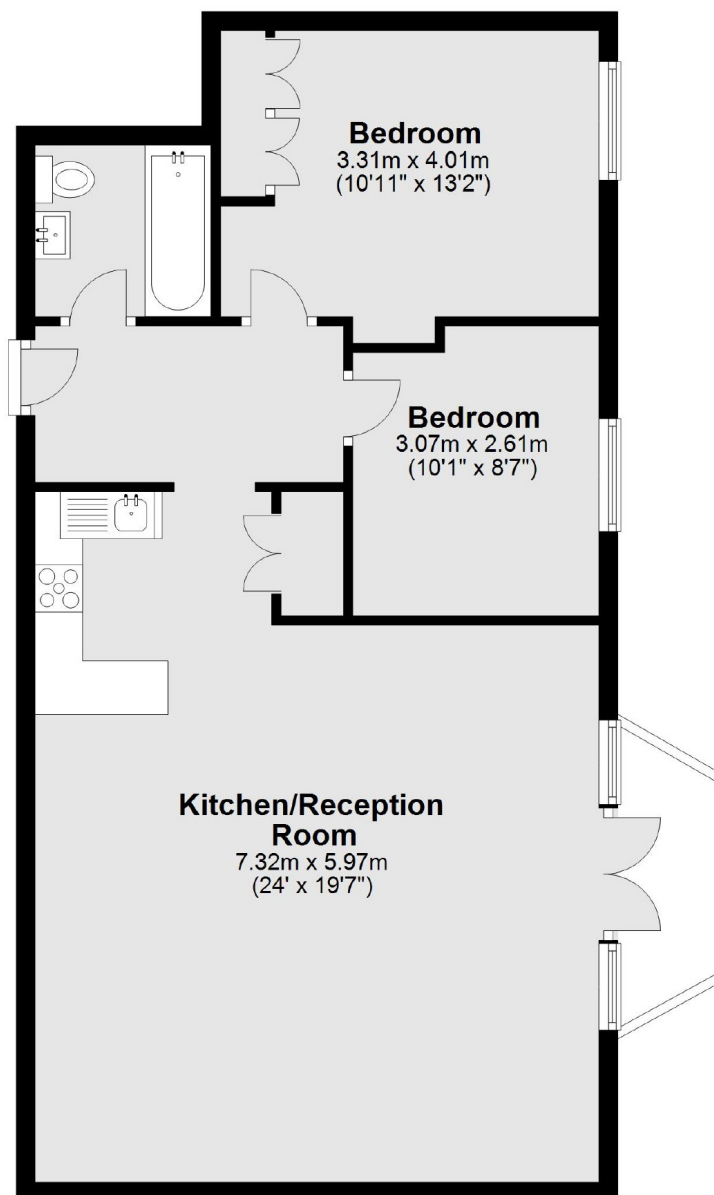
A two double bedroom apartment in a gated waterside development with a 24 hour concierge. The apartment has a large open plan living and dining room and modern kitchen, plus a balcony overlooking the canal.

Ice Wharf is a premium development overlooking Regent's Canal with private gardens and a 24 hour concierge. The property is a short walk to King's Cross station as well as the imminent Google headquarters and the shopping and dining hotspot at Coal Drops Yard.

Features

- Two Double Bedrooms
- Canal Views
- Excellent Condition
- Private Balcony
- 24 Hr Concierge
- Floor To Ceiling Windows

New Wharf Road, London, N1



Main area: Approx. 70.5 sq. metres (758.4 sq. feet)
Plus balconies, approx. 3.0 sq. metres (32.7 sq. feet)

Dexters

Bloomsbury
55-56 Coram Street
London
WC1N 1HB
Sales
020 7833 4466

Energy Rating: D. We aim to make our particulars both accurate and reliable. However they are not guaranteed; nor do they form part of an offer or contract. If you require clarification on any points then please contact us, especially if you're traveling some distance to view. Please note that appliances and heating systems have not been tested and therefore no warranties can be given as to their good working order.

 **RICS** | Regulated
Estate Agent
and Letting Agent

dexters.co.uk