



Little Russell Street, WC1A

£550,000

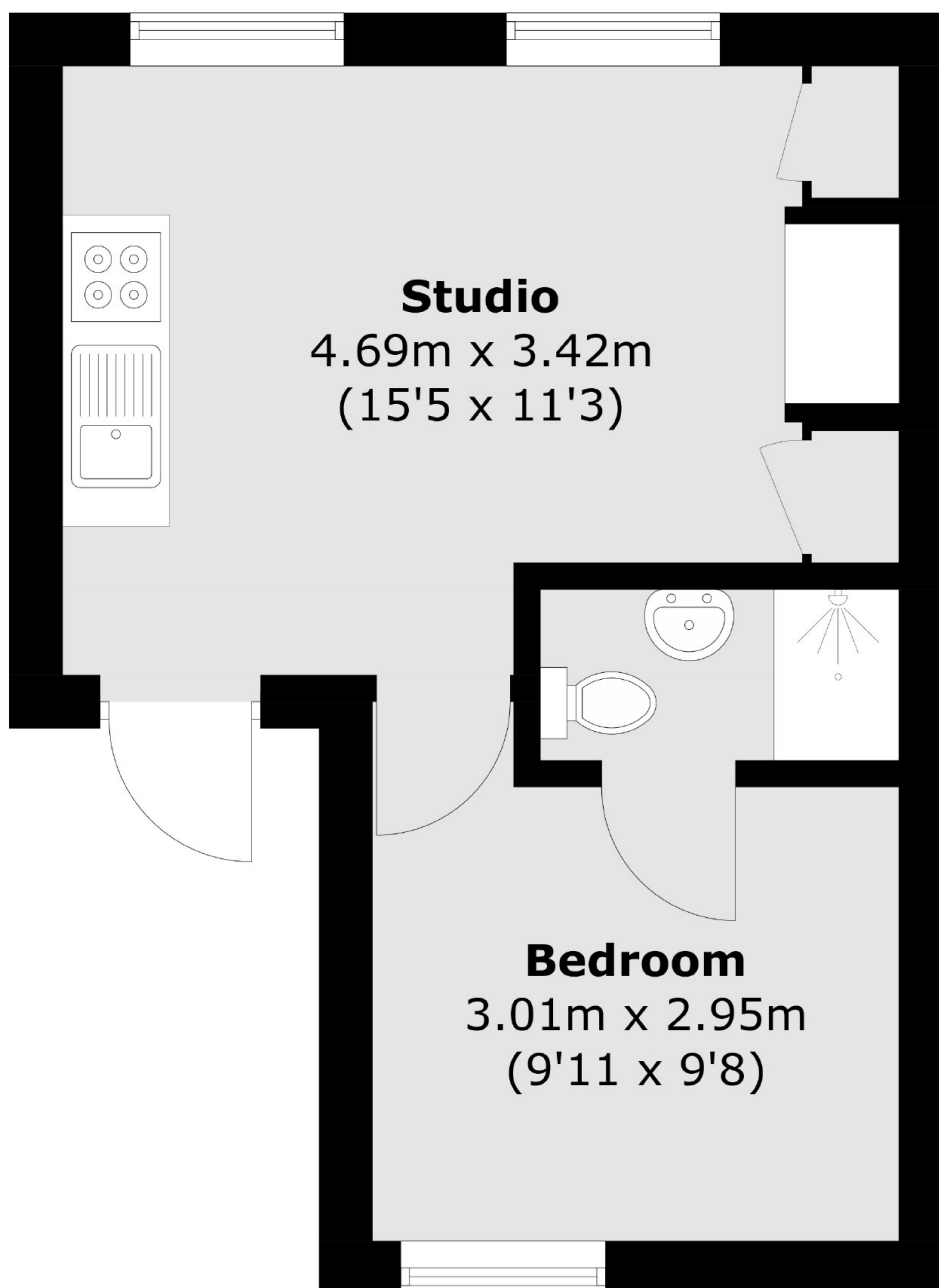
A beautifully presented one bedroom apartment located moments away from the world renowned British Museum. There is an open-plan kitchen/reception with hardwood oak flooring, sash windows and fireplace, a bedroom with fitted storage and en-suite as well as a separate room with jacuzzi bath.

Little Russell Street is located between Holborn and Tottenham Court road underground stations just north of Covent Garden. There are ample shops, restaurants and café's throughout the immediate and wider location and the British Museum on the doorstep.

Features

- Immaculate Condition
- Georgian Conversion
- En-Suite Bathroom
- Separate Jacuzzi Bath
- Excellent Location
- No Onward Chain

Little Russell Street, London, WC1A



Total area (approx.): 25.5 sq. m (274.5 sq. ft)