



## Woburn Place, WC1H

### £280,000

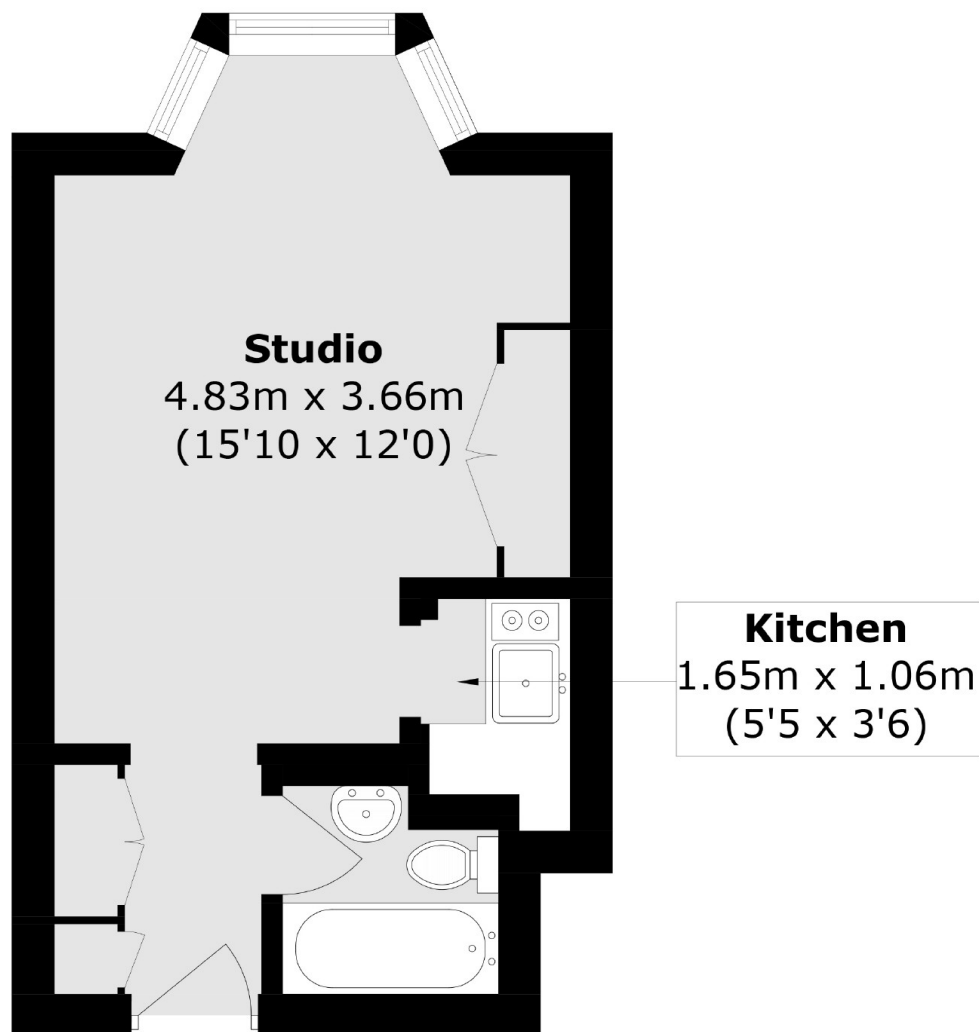
A well proportioned studio apartment located within a 1930's portered mansions block within central Bloomsbury. There is an open plan living room/bedroom with a bay window and inbuilt storage, a kitchen and separate family bathroom.

Russell Court is situated close to the Brunswick shopping centre, Russell Square underground, Russell Square Gardens and the British Museum.

### Features

- Studio Apartment
- Share Of Freehold
- Lift Access
- 24Hr Porter
- Excellent Transport
- No Onward Chain

# Woburn Place, London, WC1H



## First Floor

Total area (approx.): 22.2 sq. m (239.0 sq. ft)