

Woburn Place, WC1H

£295,000

A newly refurbished studio apartment in the popular 1930's development Russell Court. The property faces the quieter rear of the building and comes with an open plan living/kitchen space, a re-fitted kitchen and bathroom. Offers in Excess of £295,000.

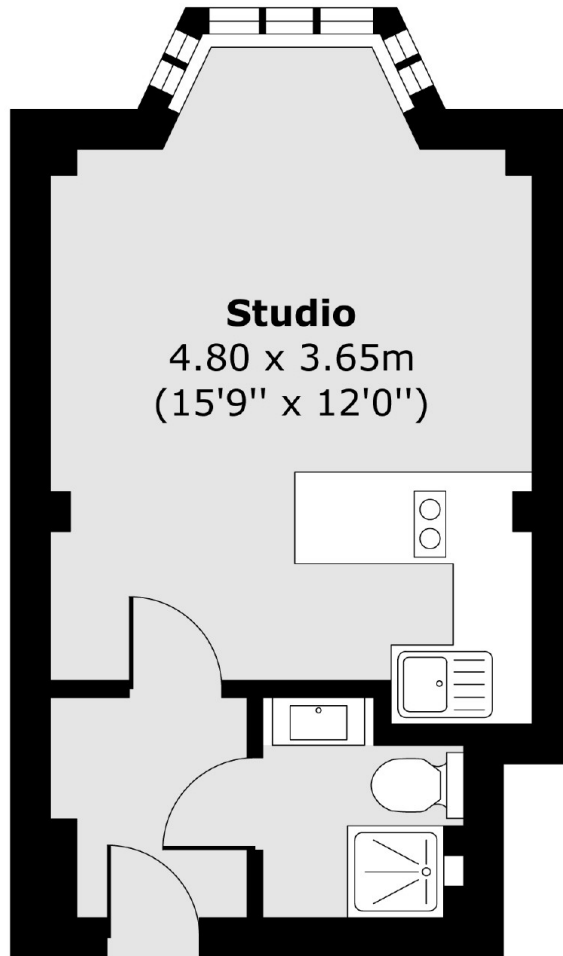
Russell Court is situated close to the Brunswick shopping centre, Russell Square underground, Russell Square Gardens and the British Museum.

Features

- Studio Apartment
- Share Of Freehold
- Lift Access
- 24Hr Porter
- Newly Refurbished
- Excellent Transport

Woburn Place, London, WC1H

Second Floor



Total area (approx.) 21.74 sq. m (234 sq. ft)