



Woburn Place, WC1H

£400,000

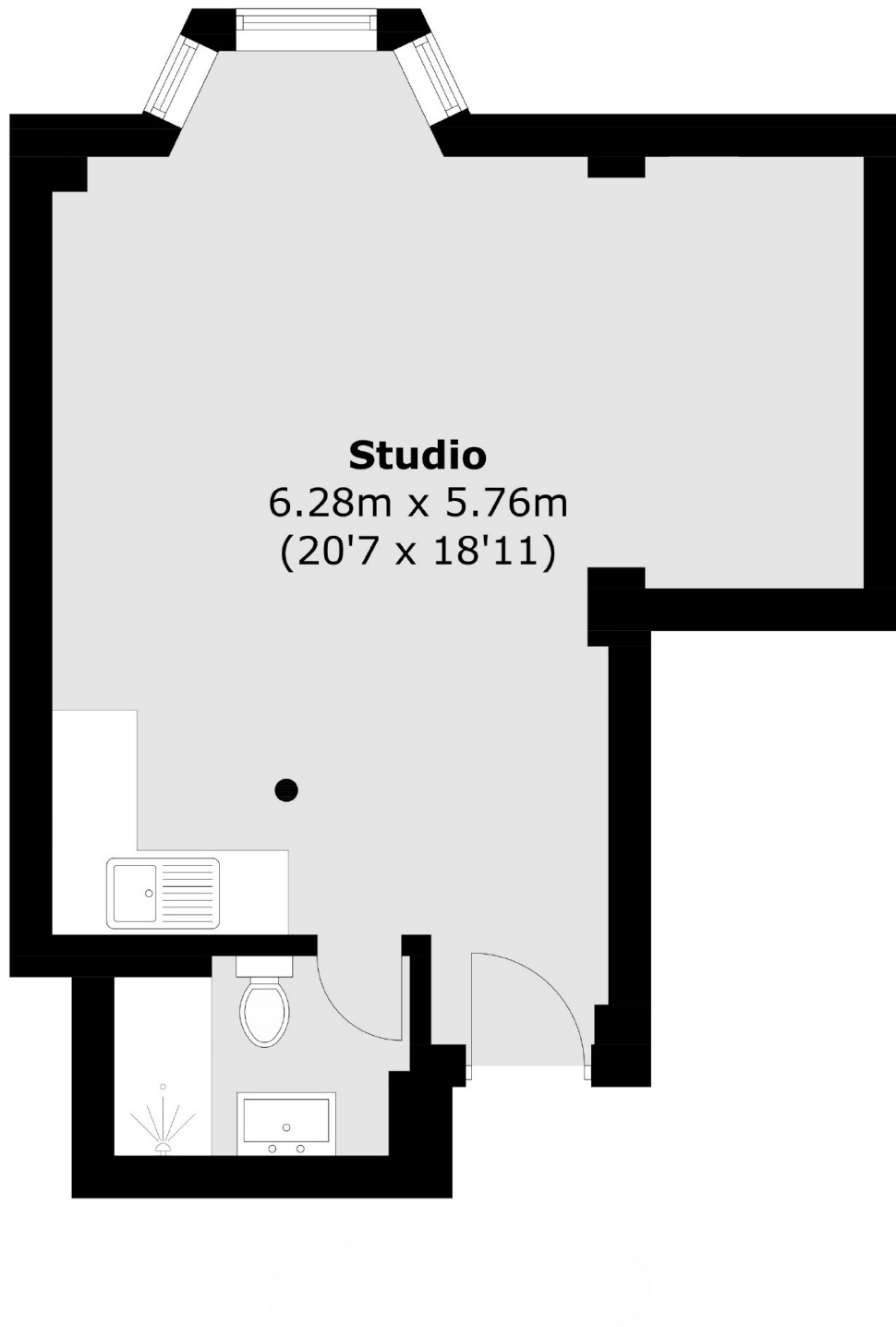
A larger than average studio measuring in excess of 350 Sq Ft with a separate sleeping area. The property has a refitted kitchen and shower room and would make a perfect first home or London base.

Located just moments from Russell Square tube station and the Brunswick Centre with a Waitrose supermarket as well as many shops and restaurants. The West End and the Eurostar terminal at St Pancras are less than half a mile.

Features

Large Studio Apartment
Share Of Freehold
24 Hr Concierge
Excellent Condition
Lift Access
No Onward Chain

Woburn Place,
London, WC1H



Total area (approx.): 33.1 sq. m (356.3 sq. ft)

Dexters

Bloomsbury
55-56 Coram Street
London
WC1N 1HB
Sales
020 7833 4466

Energy Rating: . We aim to make our particulars both accurate and reliable. However they are not guaranteed; nor do they form part of an offer or contract. If you require clarification on any points then please contact us, especially if you're traveling some distance to view. Please note that appliances and heating systems have not been tested and therefore no warranties can be given as to their good working order.

 **RICS** | Regulated
Estate Agent
and Letting Agent

dexters.co.uk