



## Woburn Place, WC1H

£325,000

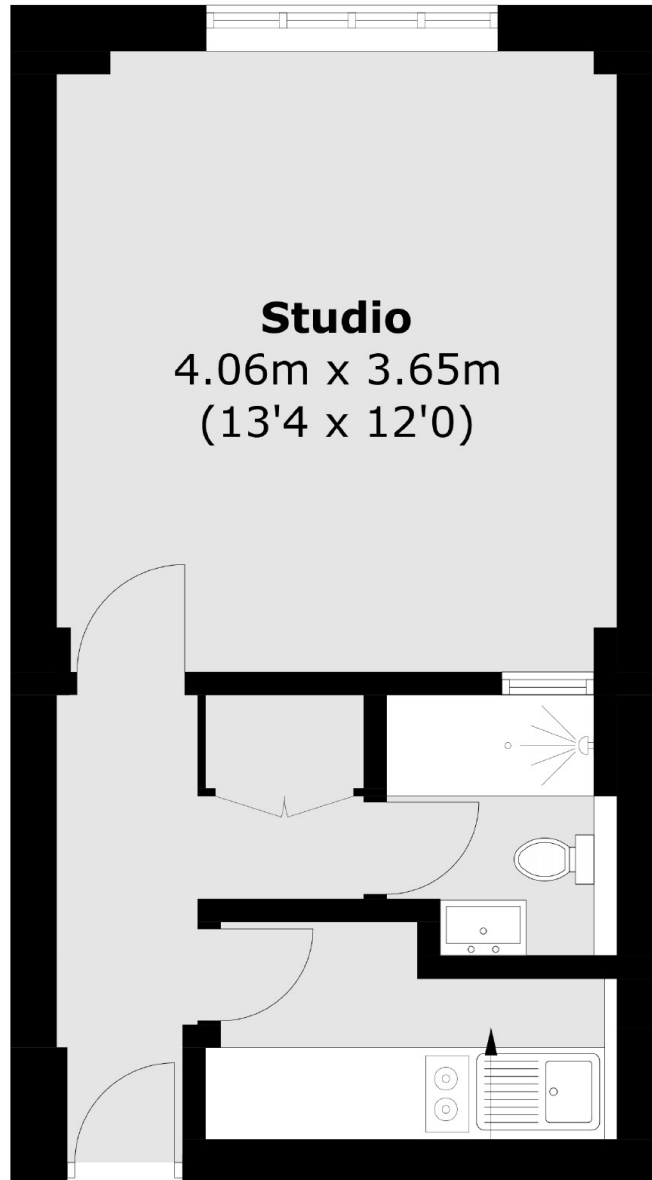
A beautifully refurbished studio apartment located on the 7th floor with views over Russell Square. There is a separate re-fitted kitchen, a shower room with floor to ceiling tiles and separate west facing living room/bedroom.

Russell Court is a portered mansion block located within central Bloomsbury. Nearby amenities include the Brunswick shopping centre and Russell Square underground.

### Features

- Excellent Condition
- 7th Floor
- Lift Access
- 24 Hour Concierge
- Share Of Freehold
- Views Over Square

# Woburn Place, London, WC1H



**Studio**  
4.06m x 3.65m  
(13'4 x 12'0)

**Kitchen**  
2.06m x 1.42m  
(6'9 x 4'8)

Total area (approx.): 26.0 sq. m (279.9 sq. ft)