



## Gray's Inn Road, WC1X

£475,000

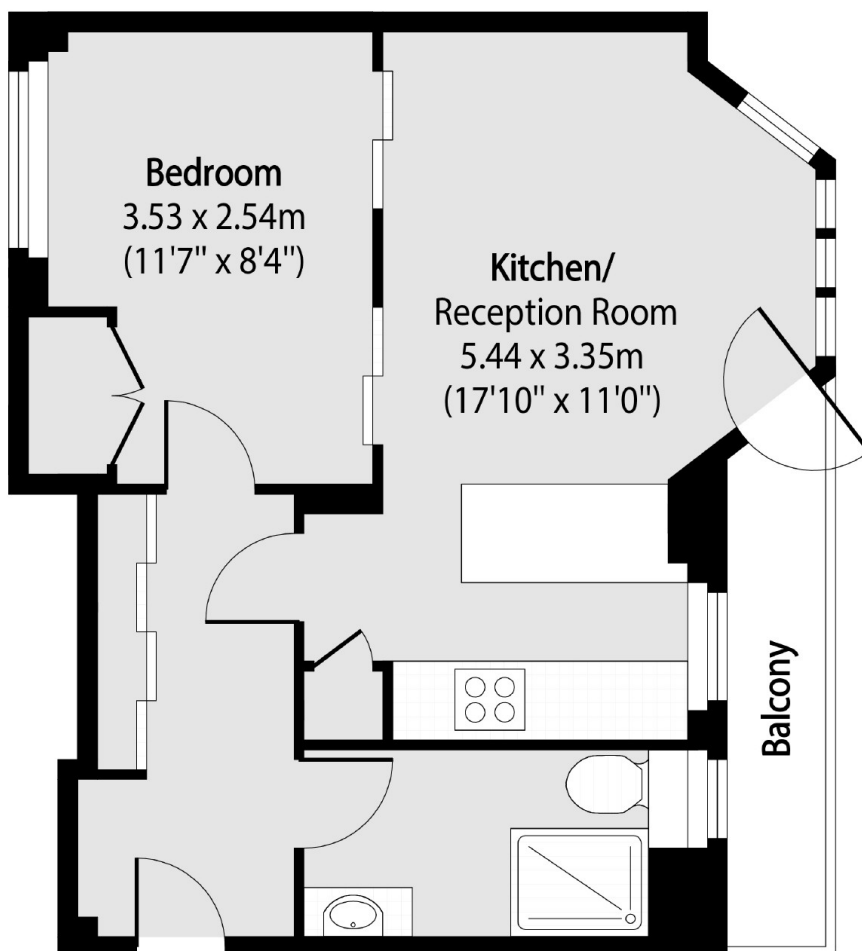
This exceptional large studio apartment is located in a charming Art Deco mansion block on Gray's Inn Road. Positioned on the sixth floor with lifts, it features a private balcony with serene, leafy views overlooking the west end. The property is presented in excellent condition, sold chain-free, and comes with a long lease.

Situated near several key transport links, including King's Cross tube station and the Eurostar terminal at St Pancras, the property offers excellent connectivity. The nearby Brunswick Centre, featuring a Waitrose supermarket, adds further convenience to the location.

### Features

- Large Studio
- Separate Sleeping Area
- Balcony
- Lift
- Long Lease
- No Onward Chain

# Gray's Inn Road, London, WC1X



Total area (approx): 35.37 sq m (381 sq. ft)

Balcony total area (approx): 3.06 sq m (33 sq. ft)