



Woburn Place, WC1H

£1,800 Per week

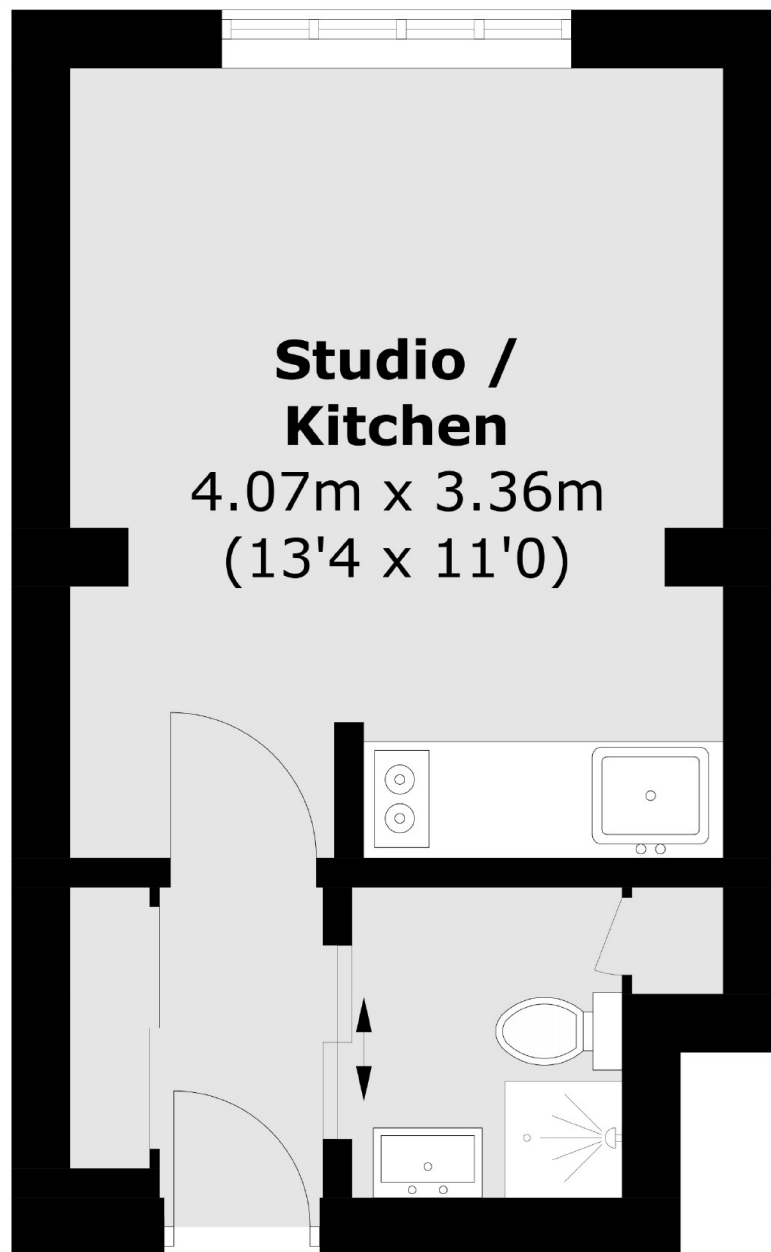
An exceptionally presented and modern studio on the 9th floor of this portered popular building in Bloomsbury. The property has ample storage, a modern bathroom and fully fitted kitchen and the bills can be included at £1,950 per month.

Russell Court is a 24 hour portered mansion building located next to Russell Square. It is a short walk to UCL, SOAS and Brunswick Centre.

Features

- 9th Floor
- 24 hour concierge
- Heating & Water Rates Included
- Lift
- Modern
- Bright

Woburn Place,
London, WC1H



Total area (approx.): 19.1 sq. m (205.5 sq. ft)

Dexters

Bloomsbury
55-56 Coram Street
London
WC1N 1HB
Lettings
020 7833 4488

Energy Rating: D. We aim to make our particulars both accurate and reliable. However they are not guaranteed; nor do they form part of an offer or contract. If you require clarification on any points then please contact us, especially if you're traveling some distance to view. Please note that appliances and heating systems have not been tested and therefore no warranties can be given as to their good working order.

 **RICS** | Regulated
Estate Agent
and Letting Agent

dexters.co.uk