



## Coram Street, WC1N

£340,000

A well appointed studio apartment based in central Bloomsbury with excellent access to transport, shopping facilities and the West End. There is built in storage, a separate kitchen and daytime porter services.

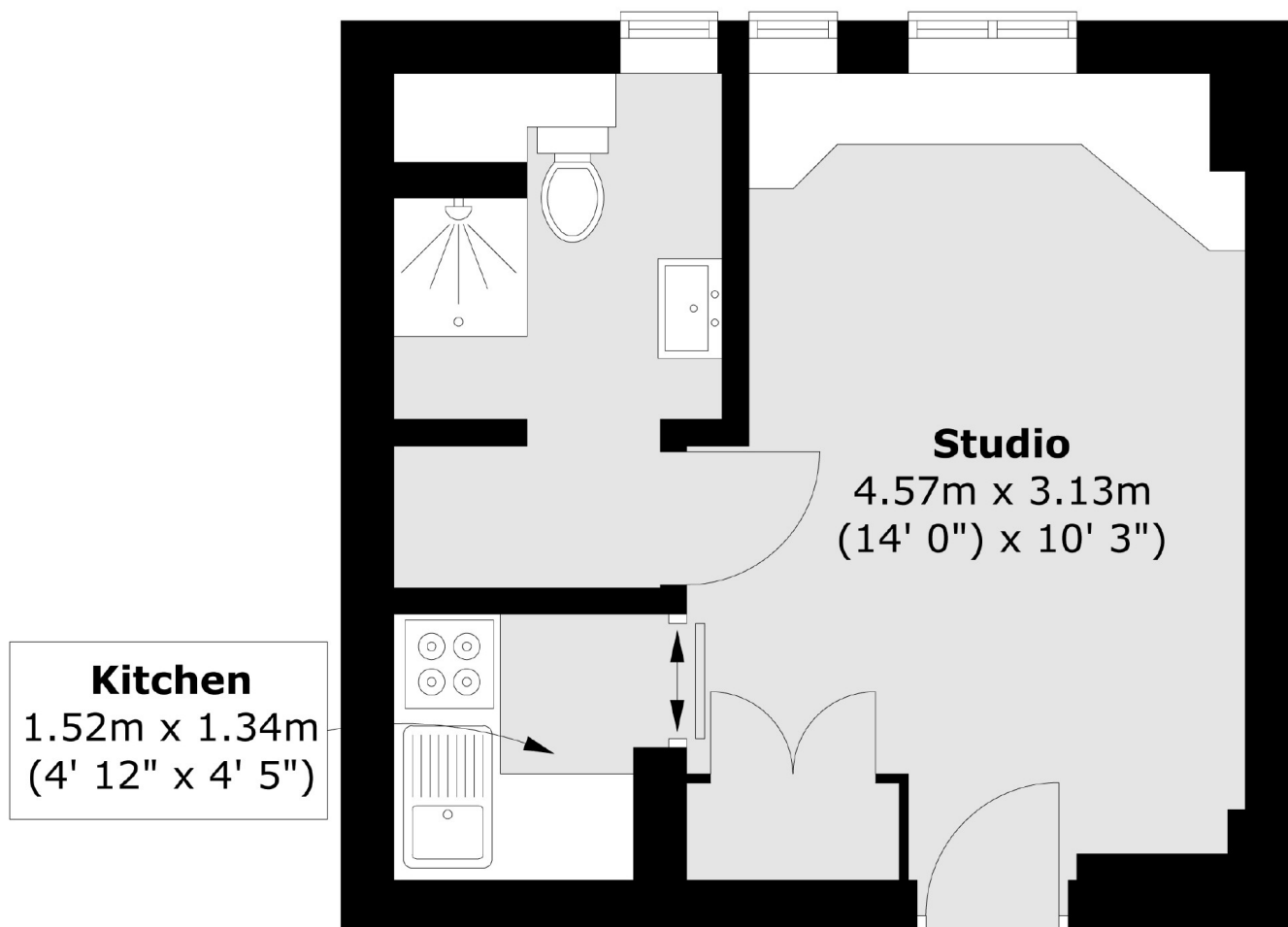
The flat is just moments from Russell Square tube station and the Brunswick shopping centre which is home to an array of shops and restaurants including a large Waitrose supermarket. London's best Universities are also nearby.

### Features

- Studio Apartment
- Separate Kitchen
- Iconic 1930's Building
- Daytime Porter
- Ideal Base Or Investment
- No Onward Chain

**Coram Street,  
London, WC1N**

**Ground Floor**



Total area (approx.) : 22 sq. m (237 sq. ft)