



## Bernard Street, WC1N

£699,500

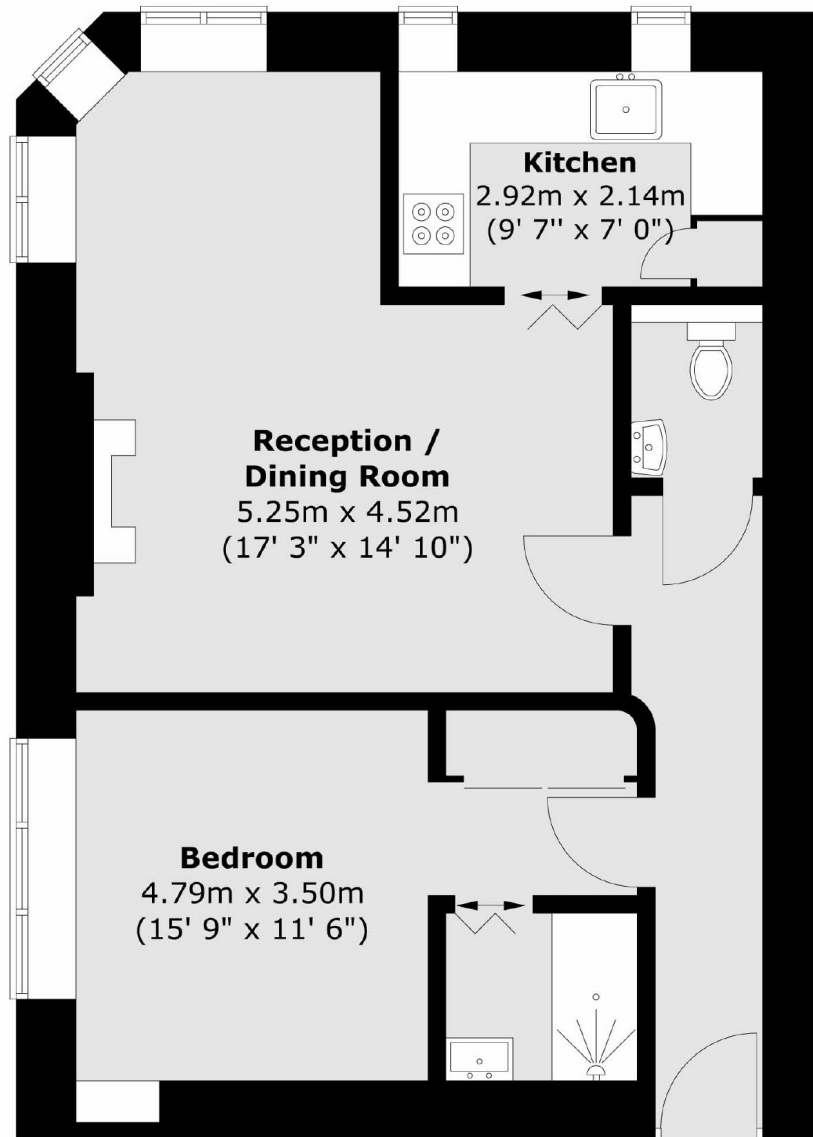
A one double bedroom home located on the first floor of a period mansion block. The property has been refurbished throughout and includes a separate re-fitted kitchen, and en-suite shower as well as separate WC, lots of period features as well as bow and arched windows. The flat is very centrally positioned, with Kings Cross-St Pancras a 15 minute walk north and Covent Garden & Soho a 15 minute walk south.

Bernard Mansions is located opposite Russell Square Underground, local amenities include a Waitrose as well as a vast array of eateries and shopping outlets including the Brunswick Centre.

### Features

Central Bloomsbury  
Close To Transport  
Share Of Freehold  
Excellent Condition  
High Ceilings  
Large Windows

Bernard Street,  
London, WC1N



Total area (approx.) : 50.0 sq. m (539 sq. ft)

**Dexters**

Bloomsbury  
55-56 Coram Street  
London  
WC1N 1HB

Sales  
020 7833 4466

Energy Rating: C. We aim to make our particulars both accurate and reliable. However they are not guaranteed; nor do they form part of an offer or contract. If you require clarification on any points then please contact us, especially if you're traveling some distance to view. Please note that appliances and heating systems have not been tested and therefore no warranties can be given as to their good working order.

 **RICS** | Regulated  
Estate Agent  
and Letting Agent

dexters.co.uk