



Woburn Place, WC1H

£290,000

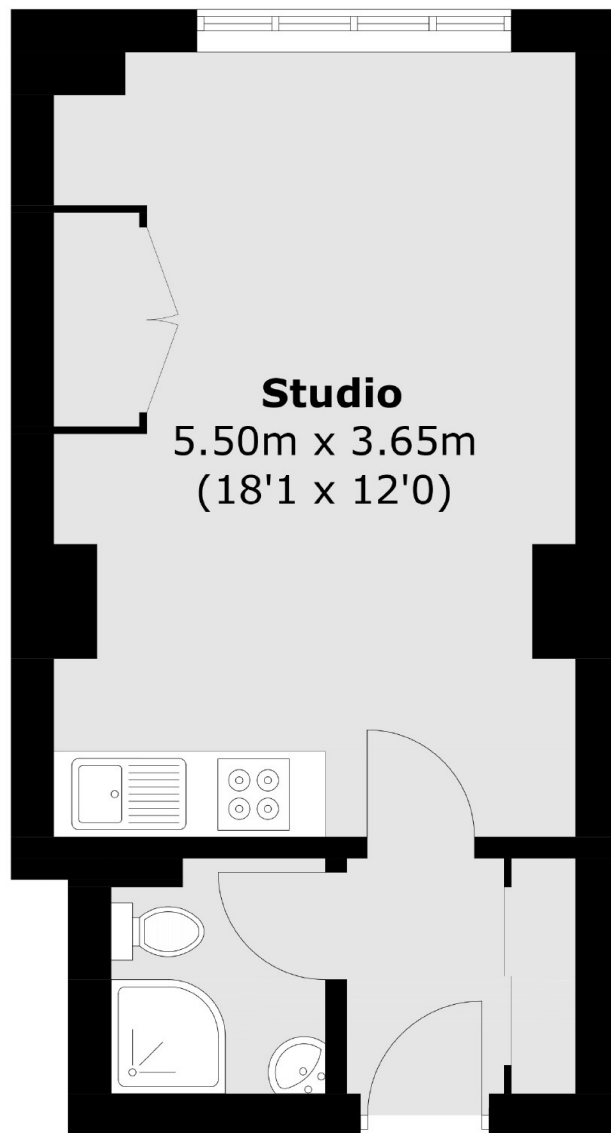
A recent refurbished studio apartment located in a 1930's development in central Bloomsbury. The property is in good decorative condition, there is built in storage, a re-fitted shower room and kitchen with integrated fridge/freezer and washing machine.

Located just moments from Russell Square tube station and the Brunswick Centre with a Waitrose supermarket and good access to top restaurants, bars, shopping and Universities. The West End and the Eurostar terminal at St Pancras are near by.

Features

- Excellent Condition
- Share Of Freehold
- Lift Access
- 24 Hr Concierge
- Close To transport
- No Onward Chain

Woburn Place, London, WC1H



Total area (approx.): 26.1 sq. m (280.9 sq. ft)

Dexters

Bloomsbury
55-56 Coram Street
London
WC1N 1HB
Sales
020 7833 4466

Energy Rating: C. We aim to make our particulars both accurate and reliable. However they are not guaranteed; nor do they form part of an offer or contract. If you require clarification on any points then please contact us, especially if you're traveling some distance to view. Please note that appliances and heating systems have not been tested and therefore no warranties can be given as to their good working order.

 **RICS** | Regulated
Estate Agent
and Letting Agent

[dexters.co.uk](https://www.dexters.co.uk)