

Handyside Street, N1C

£1,050 Per week

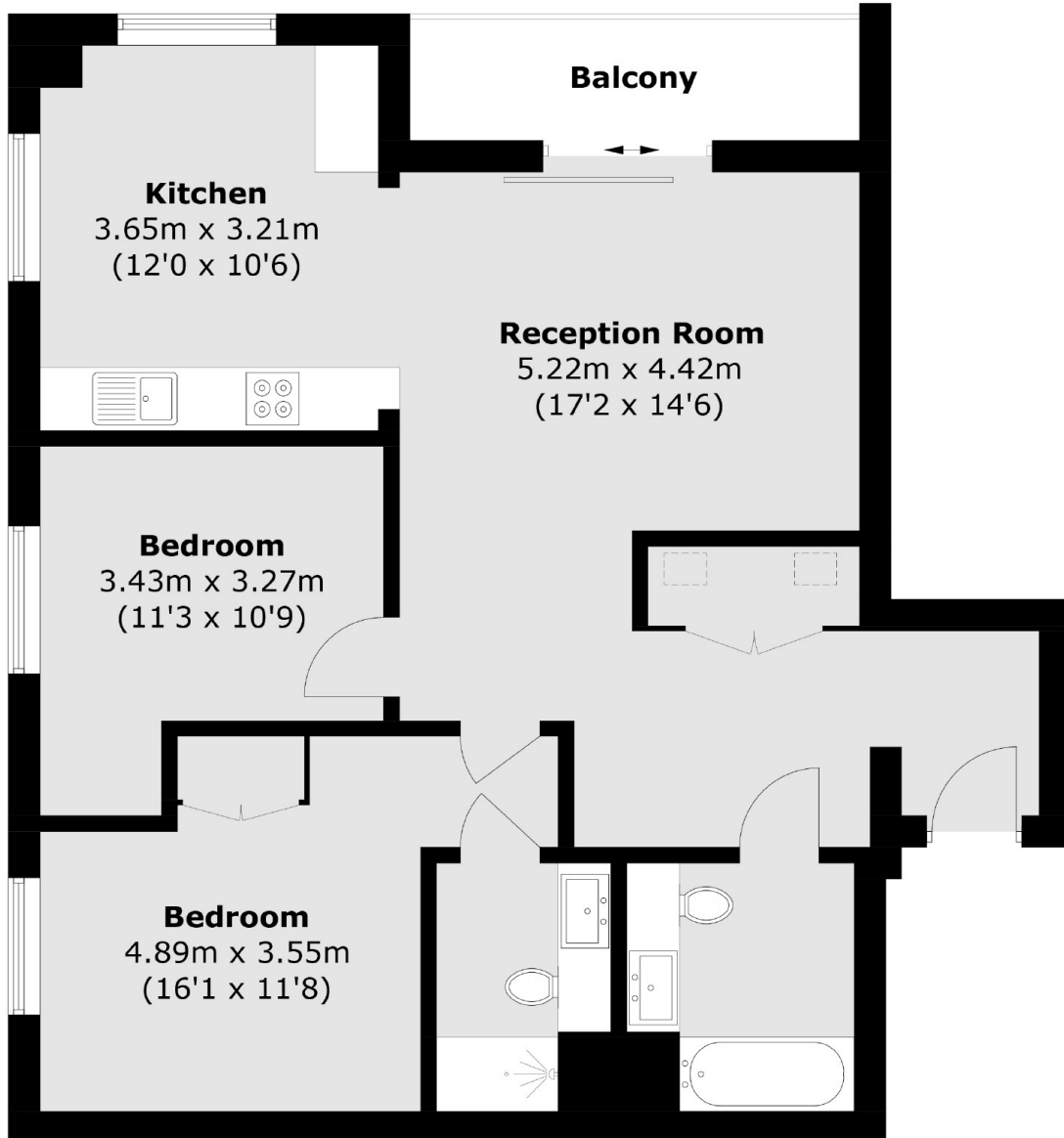
Exceptionally finished two bedroom apartment on the fourth floor of the impressive Plimsoll building. It has two double bedrooms, a spacious open plan reception and floor to ceiling windows.

The Plimsoll Building is just a short walk from Kings Cross/St Pancras station providing convenient access for Eurostar to Paris and Europe. It is next to Coal Drops Yard retail quarter with a vast amount of new shops, restaurants and facilities.

Features

- Bike Storage
- Fully Fitted Gym
- Amazing Building
- 24 Hour Concierge
- Balcony
- Contemporary Kitchen

Handyside Street,
London, N1C



Total area (approx.): 76.1 sq. m (819.1 sq. ft)
Balcony : 4.9 sq. m (52.7 sq. ft)