

## Chalton Street, NW1

£675,000

Located on the second floor with lift access this three double bedroom apartment would make a perfect buy to let investment or family home. The development has undergone major renovations including new double glazed sash windows and is offered with no onward chain.

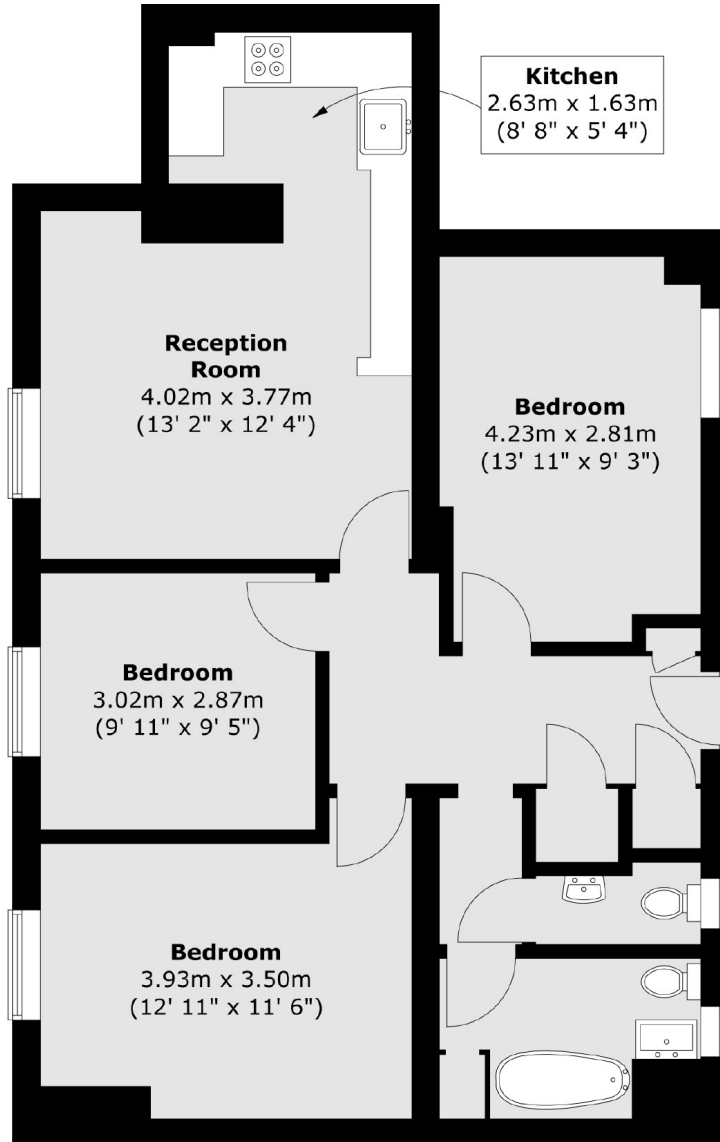
Levita House is well positioned on Ossulston Street between both King's Cross St Pancras and Euston stations. There are a vast array of amenities nearby including The British Library.

### Features

- Three Double Bedrooms
- Excellent Condition
- Close To Transport
- Parking Available
- New Sash Windows
- No Onward Chain

Chalton Street,  
London, NW1

**Second Floor**



Total area (approx.) : 75 sq. m (807 sq. ft)