



## Judd Street, WC1H

£625,000

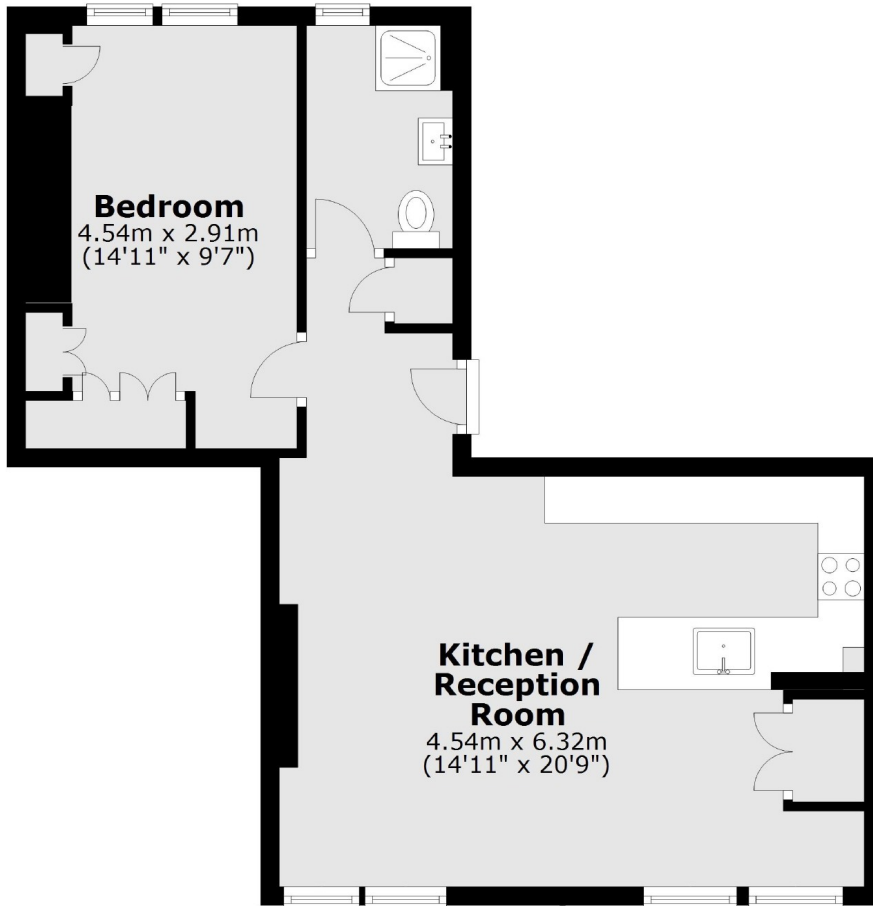
A beautifully refurbished top floor apartment with uninterrupted views across the capital. There is an open-plan kitchen/reception, a double bedroom with fitted storage and a family bathroom. The property is being sold with a tenant in situ until July 2026 paying £2578 PCM.

Jessel House is located on Judd Street in Bloomsbury just a short walk from the award winning Granary Square at King's Cross St Pancras as well as the soon to open Google HQ.

### Features

- Excellent Condition
- Top Floor
- Lift Access
- Low Service Charge
- Ready Made Investment
- Close To Transport

# Judd Street, London, WC1H



Total area: approx. 49.1 sq. metres (528.1 sq. feet)