



## Brunswick Centre, WC1N

£600 Per week

A spacious one double bedroom flat with a semi open plan kitchen reception room, located within a very popular purpose built block in the Brunswick Centre. Good storage, integrated appliances including a dishwasher and a private terrace.

Foundling Court is situated on the West side of the Brunswick Centre, within 3 minutes walk from Russell Square tube station. It has secure access, direct and convenient access to the shops in the Brunswick Centre.

### Features

- One Bedroom
- Heating & Hot Water Inc
- Terrace
- Wooden Floors
- Spacious Reception Area
- Russell Square Tube

# Brunswick Centre, London, WC1N

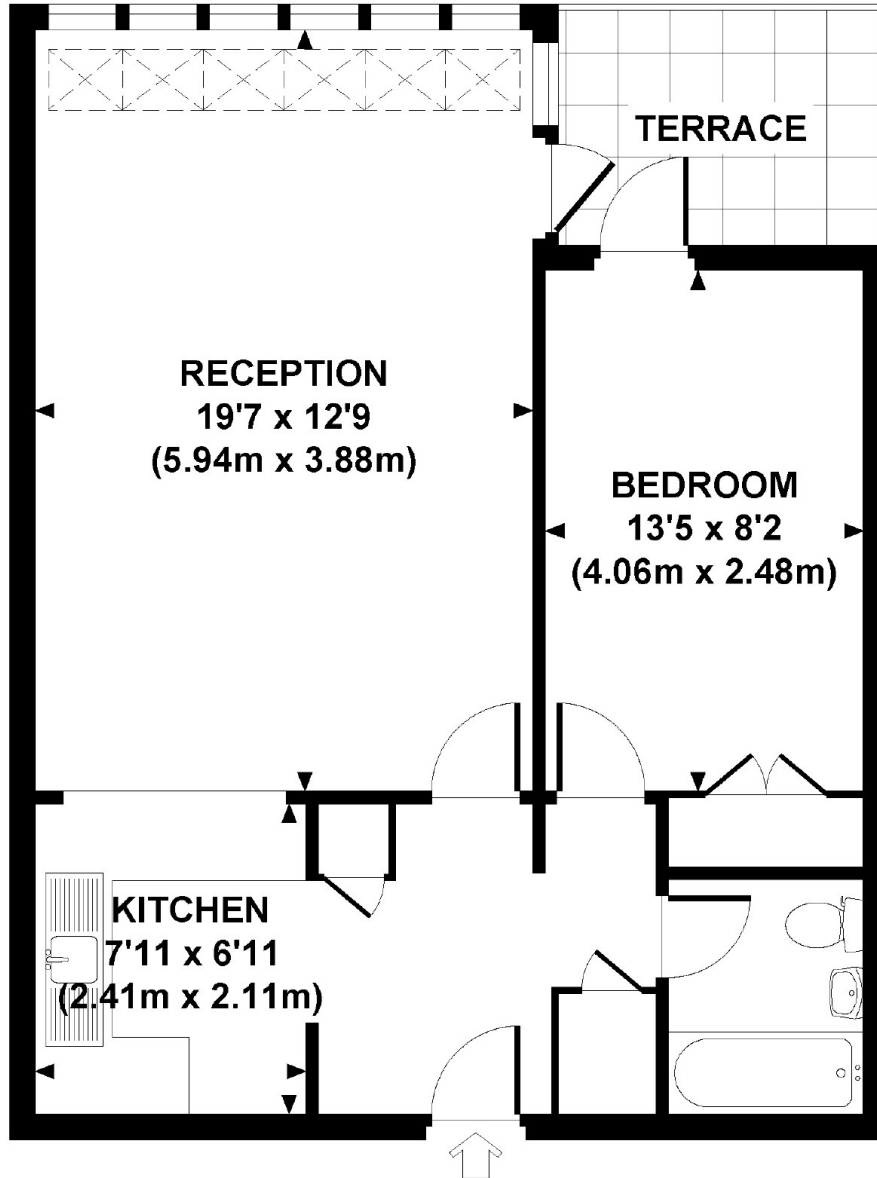
## FOUNDLING COURT, BRUNSWICK CENTRE, WC1N

Approx. gross internal area

536 Sq Ft / 49.8 Sq M.

Representation of current layout

Not to scale.



FIRST FLOOR