



## Regent Square, WC1H

£575,000

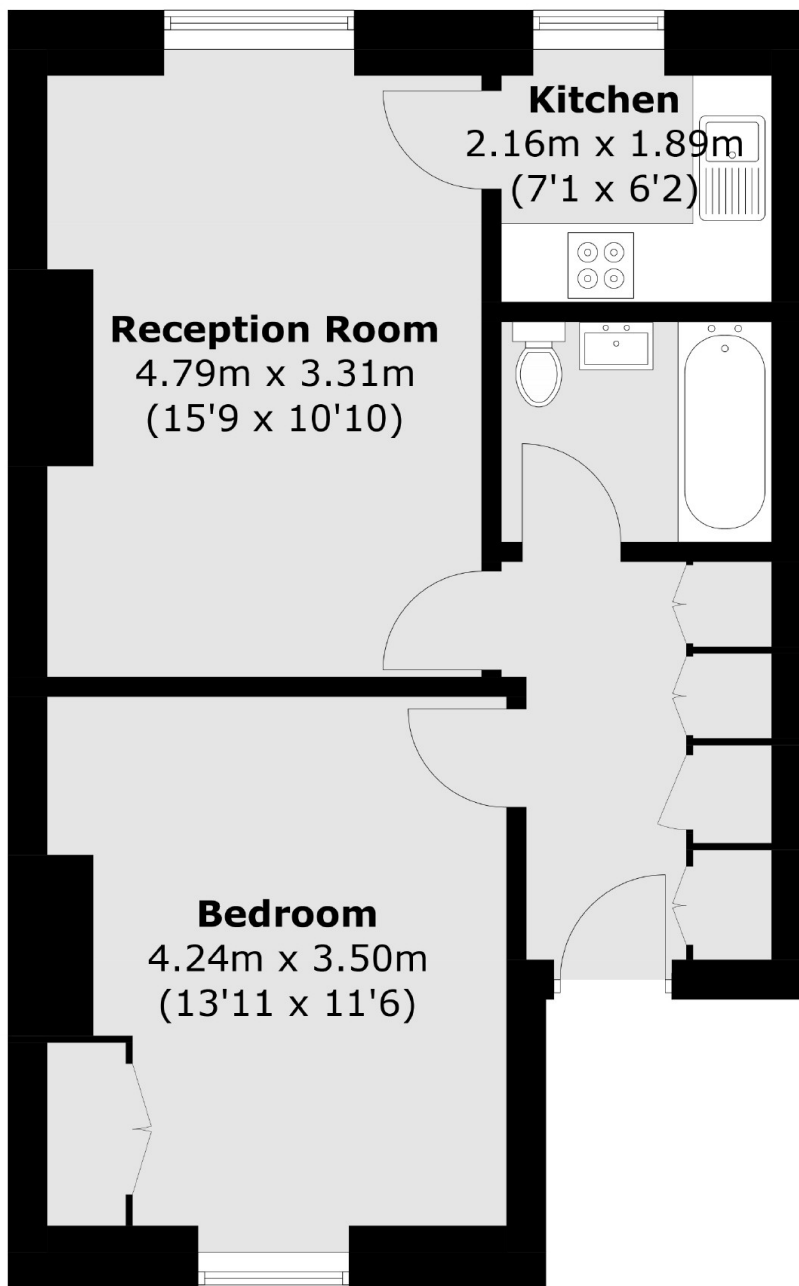
This charming one-bedroom apartment, situated on the third floor of a period building, offers a perfect blend of comfort and convenience. The property features a spacious double bedroom with stunning views of St. George's Gardens, as well as a separate, well-equipped kitchen.

Perfect as a central London base or buy to let investment, this home is ideally situated in the heart of Bloomsbury on Regent Square. Residents will enjoy the vibrant local scene, with an array of independent cafés and popular retail options at The Brunswick Centre just a short stroll away. Excellent transport links are close by, with Russell Square Tube station moments away and King's Cross less than 500 metres from your doorstep.

### Features

- One Bedroom
- Approx 500 sqft
- Small Private Block
- Period Features
- No Onward Chain
- Share of Freehold

# Regent Square, London, WC1H



Total area (approx.): 46.3 sq. m (498.4 sq. ft)