



## Cromer Street, WC1H

£995 Per week

A spacious three double bedroom flat on the fifth floor of this purpose built block. There is a large separate kitchen, a balcony with views of the gardens below and wooden floors throughout.

Bramber is situated on the corner of Cromer Street and Judd Street a short walk from Russell Square, Brunswick Centre and UCL. It is a purpose built building with lifts to each floor. Kings Cross and Euston are also within a 5 minute walk.

### Features

- Three Double Bedrooms
- Separate Kitchen
- Additional WC
- Russell Square location
- Brunswick Centre nearby
- Balcony

# Cromer Street, London, WC1H

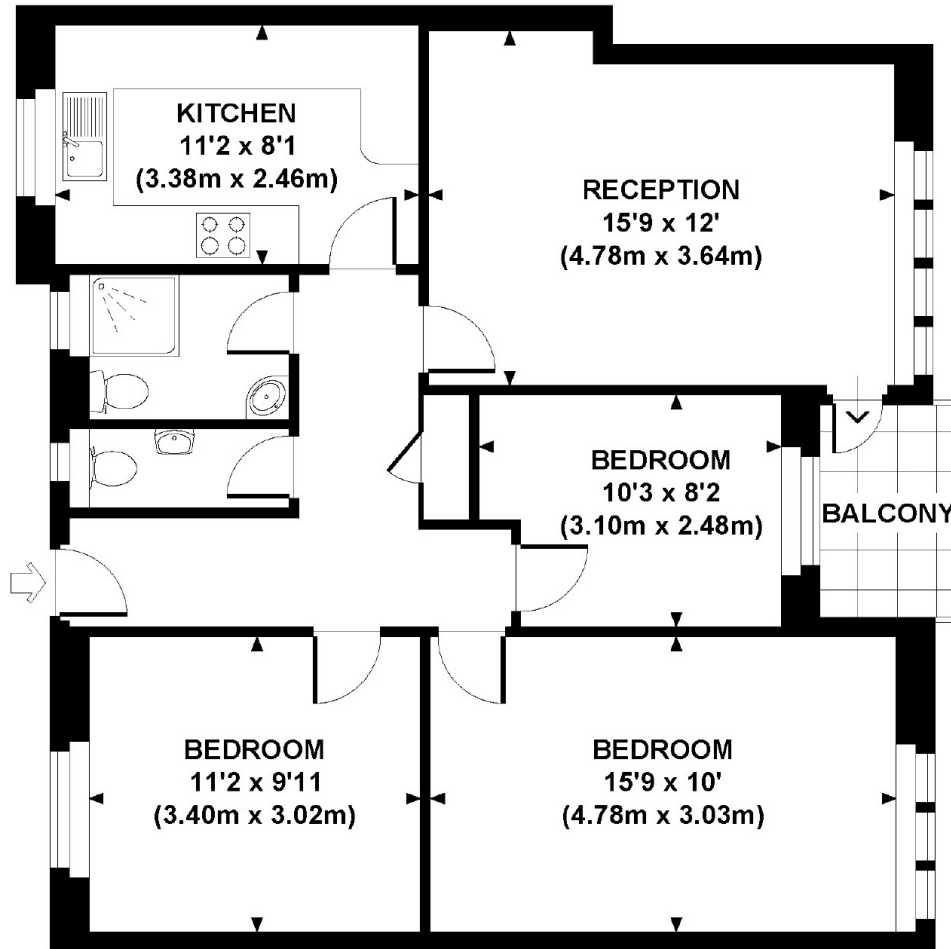
## BRAMBER, CROMER STREET, WC1H

Approx. gross internal area

792 Sq Ft / 73.6 Sq M.

Representation of current layout

Not to scale.



FIFTH FLOOR