



Robert Street, NW1

£525,000

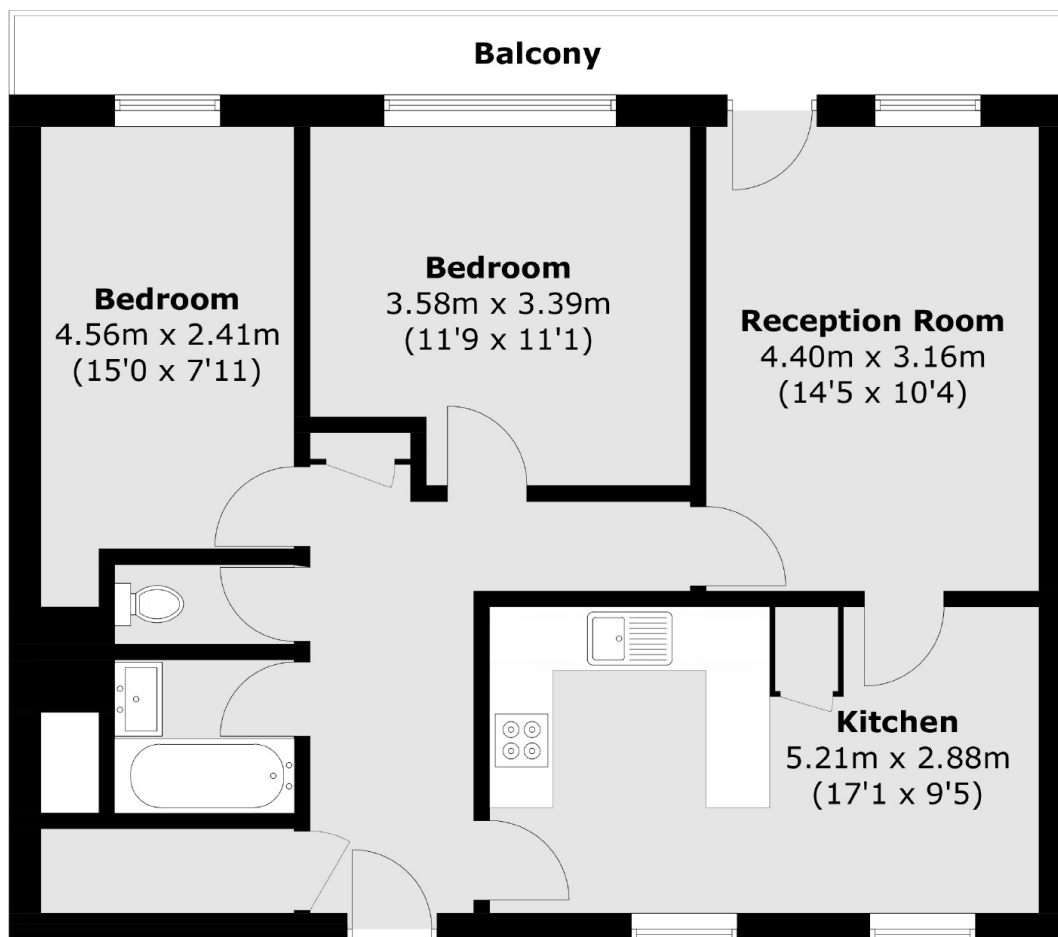
This spacious two-bedroom apartment includes a generously sized and well-lit reception area, an open plan kitchen and dining room, abundant storage options, private balcony access, and two double bedrooms with floor-to-ceiling windows.

Situated in a prime location providing easy access to Central London, the lively Camden area, and the beautiful Regents Park. The purpose-built development is well positioned, allowing for quick commutes with excellent rail connections at Euston and King's Cross stations, as well as Warren Street tube station.

Features

- Two Double Bedrooms
- Separate Living Room
- Private Balcony
- Over 750 Sq Ft
- Lift Access
- Excellent Transport Links

Robert Street, London, NW1



Total area (approx.): 70.6 sq. m (759.9 sq. ft)

Balcony area (approx.): 7.4 sq. m (79.6 sq. ft)