



Fleet Square, WC1X

£1,250 Per week

This three bedroom 2bathroom family house is ideal for sharers or a family. It has an open plan reception, wooden floors and very stylish kitchen with dishwasher. It also has a parking space, shed and bike storage. Gas and heating are included.

It has secure gate entry in a well maintained housing estate a short walk from Russell Square and Kings Cross, very convenient for UCL, SOAS and the various other Bloomsbury academic institutions.

Features

- Front Garden
- Gas Included
- Heating Included
- Parking Space
- Open Plan Reception
- Wooden Floors

Fleet Square, London, WC1X

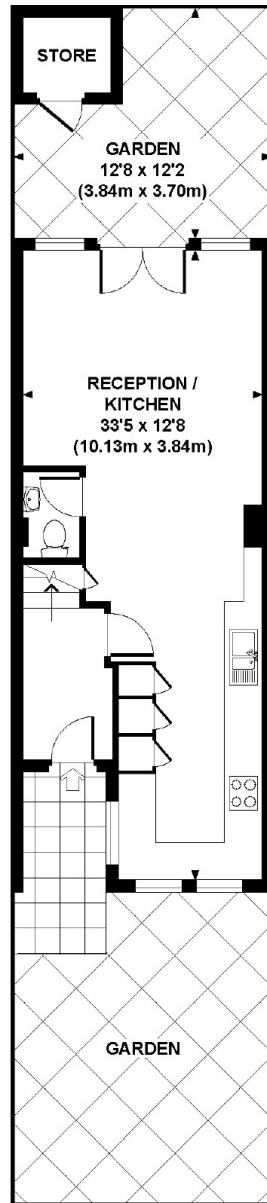
FLEET SQUARE, WC1X

Approx. gross internal area

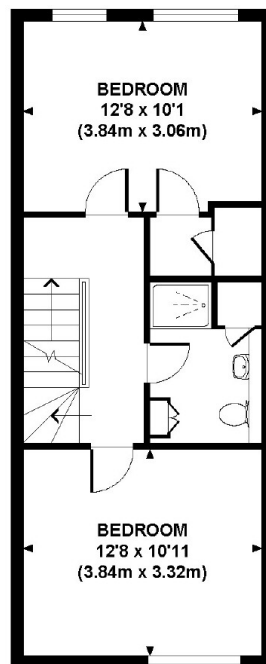
1117 Sq Ft. / 103.8 Sq M.

Representation of current layout

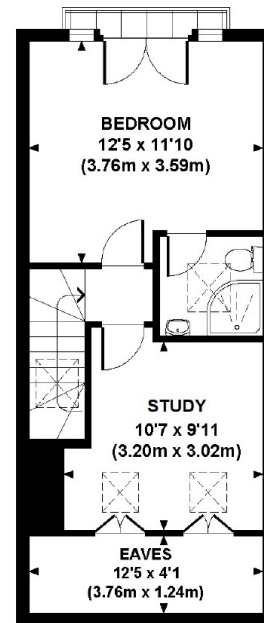
Not to scale.



GROUND FLOOR



FIRST FLOOR



SECOND FLOOR