



Guilford Street, WC1N

£750 Per week

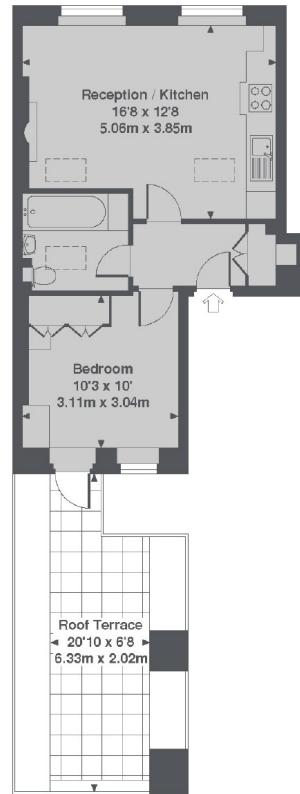
A very well presented one bedroom apartment on the top floor of a converted Georgian building. There is a spacious open plan reception with modern kitchen, bathroom and double bedroom leading to a private roof terrace.

On the doorstep of Russell Square and The Brunswick shopping centre (Waitrose, cafes, shops and restaurants). It is also a short distance from Holborn and Kings Cross.

Features

- One Bedroom
- Private Roof Terrace
- Modern Interior
- Wooden Floor Throughout
- Georgian Building
- Close To Brunswick

Guilford Street, London, WC1N



3rd floor

Guilford Street, WC1N

Total Approx. Floor area 393 Sq. Ft. (36.5 Sq. M.)