



Camley Street, N1C

£1,095 Per week

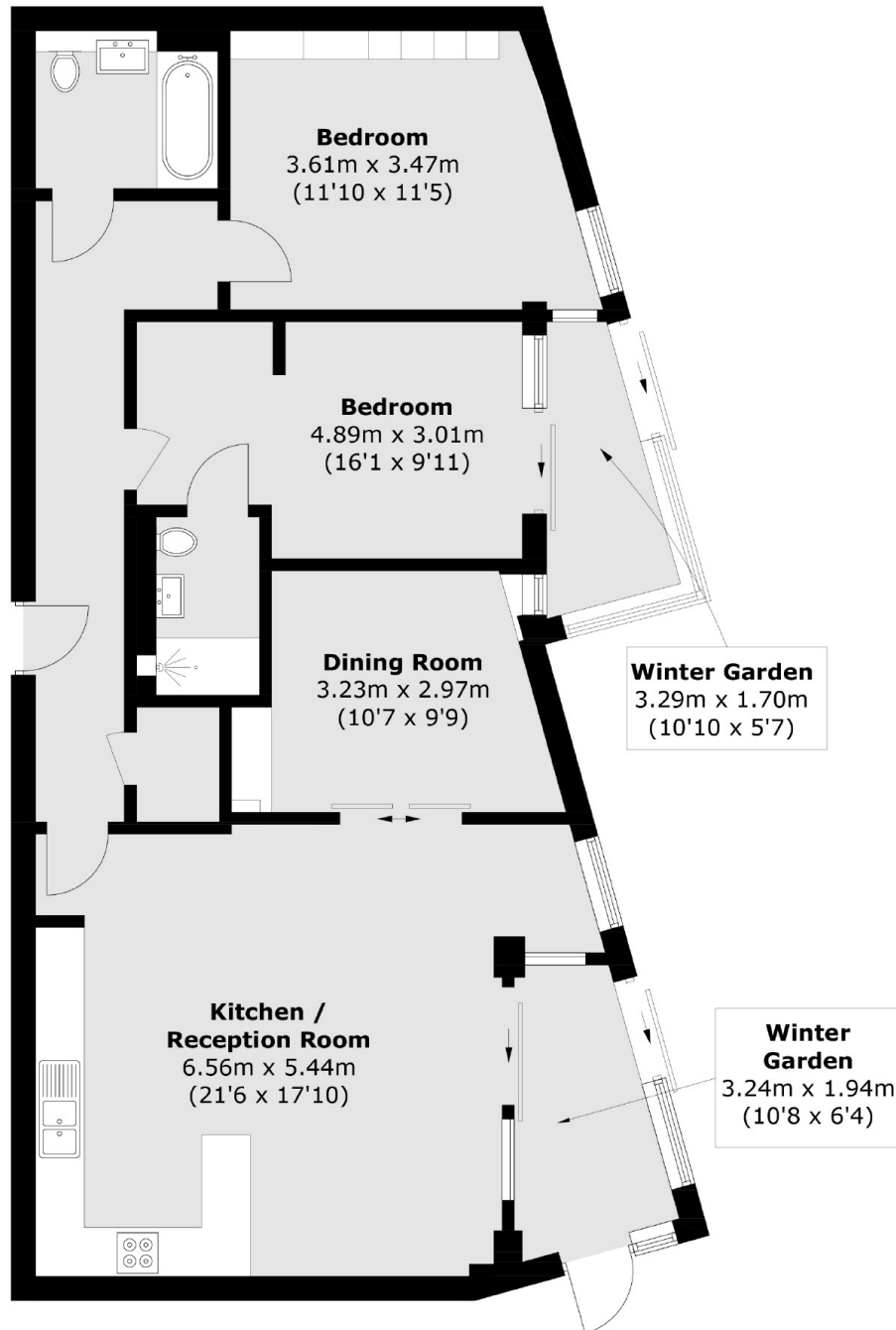
A unique 1,150 sq ft apartment situated on the upper floors of the impressive Onyx Apartments. Finished to an exceptional standard, this unit includes two large bedrooms and a versatile double room that can be used as a dining room, guest room, or study. The kitchen and bathrooms are very modern, while the reception area is flooded with natural light through the floor-to-ceiling windows, which lead onto the private winter garden.

The Onyx is short walk from Kings Cross/St Pancras station providing convenient access for Eurostar to Paris and Europe. It is next to Coal Drops Yard retail quarter with a vast amount of new shops, restaurants and facilities.

Features

- Two Double Bedroom
- One Large Versatile Room
- Comfort Cooling
- 24 Hour Concierge
- Two Private Winter Garden
- Communal Terrace

Camley Street,
London, N1C



Total area (approx.): 106.6 sq. m 1,147.4 sq. ft)