



Southampton Row, WC1B

£650,000

Cranfield House is a very well managed red brick mansion block. The property includes a balcony which faces the communal gardens. Inside, you'll find a spacious living room, two double bedrooms, a bathroom, and a separate WC. The building is further enhanced by its porter service.

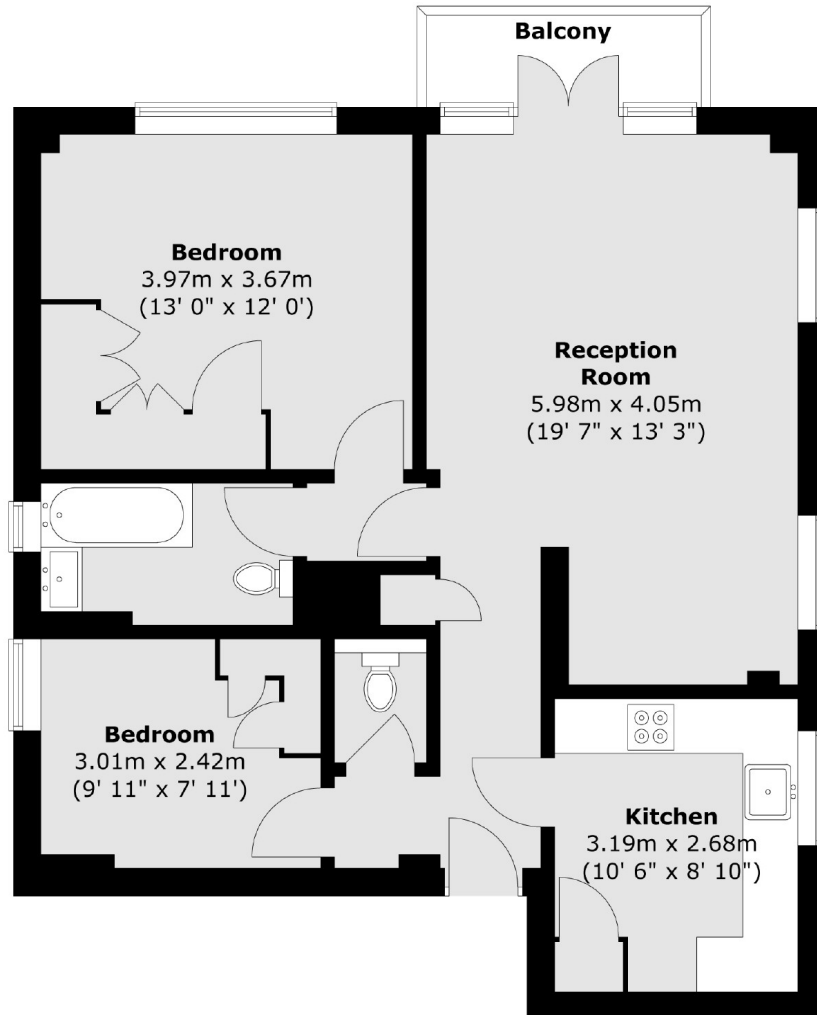
The flat is located between Russell Square and Holborn underground stations (Central and Piccadilly lines), nearby attractions include the world renowned British Museum, Oxford Street, UCL and Covent Garden.

Features

- Two Double Bedrooms
- Additional WC
- Private Balcony
- On Site Porter
- Lift
- Secure Parking

Southampton Row, London, WC1B

First Floor



Total area (approx.) : 70 sq. m (753 sq. ft)
Total balcony area (approx.) : 3 sq. m (32 sq. ft)