

## York Way, N1C

£292,500

Designed by award winning architects Maccreanor Lavington and located on the 15th floor with uninterrupted views, this one double bedroom apartment is offered as a 50% share. There are two Juliette balconies, a communal roof terrace and masses of natural light.

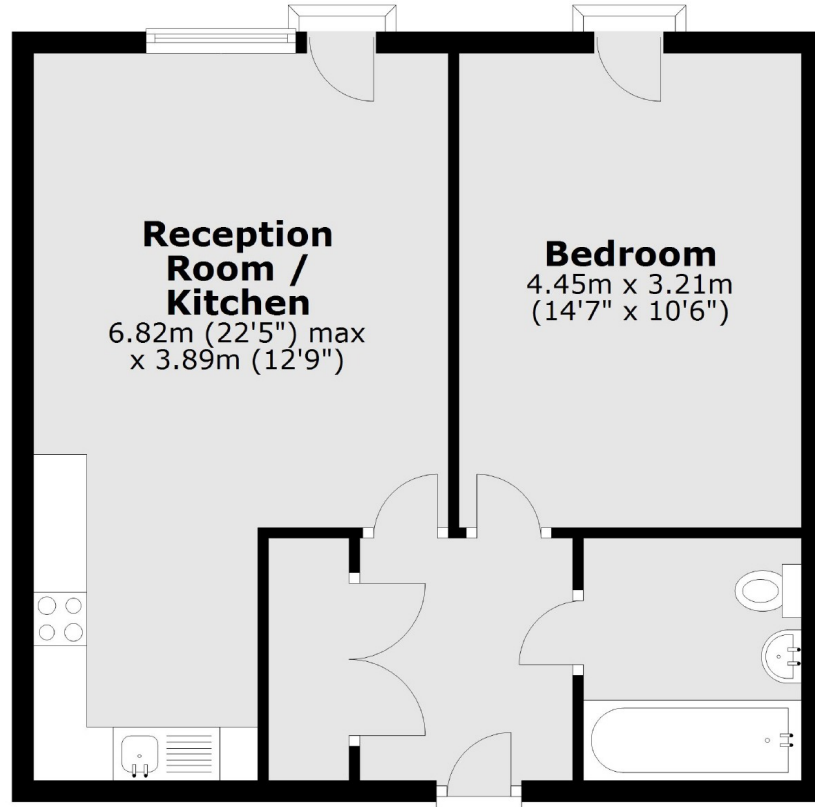
Saxon Court is part of the new and exciting 67 acre re-development at King's Cross and is perfectly located for walks along the canal, Facebook HQ, Coal Drops Yard and numerous restaurants including a large Waitrose.

### Features

- One Double Bedroom
- 50% Shared Ownership
- Secure Gated Development
- Close To Granary Square
- Communal Roof Garden
- No Onward Chain

# York Way, London, N1C

## 15th Floor



Total area: approx. 49.1 sq. metres (528.5 sq. feet)