

Sandland Street, WC1R

£980,000

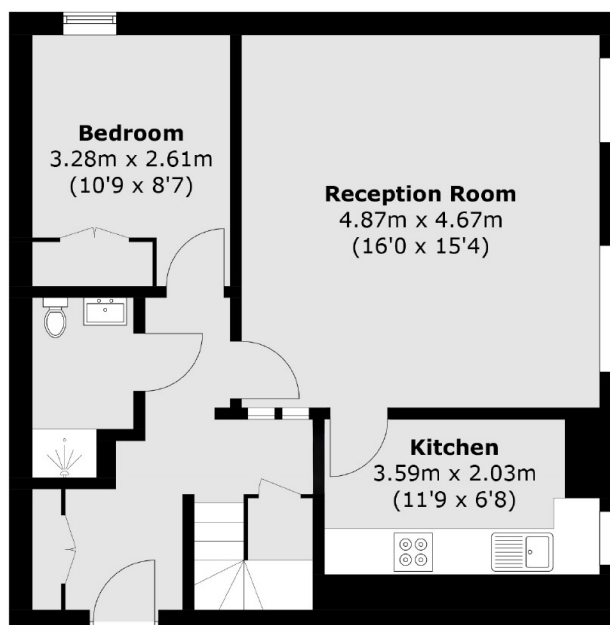
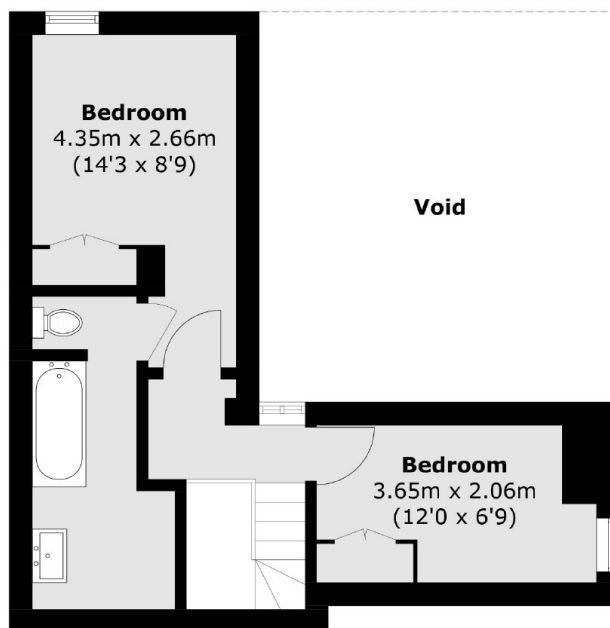
A well presented, three double bedroom home with two bathrooms arranged over two floors. The property is located within a secure development with lift access and includes a separate kitchen and built in wardrobes in all bedrooms.

Three Cups Yard is a gated development situated between Gray's Inn and Red Lion Square, the nearest stations are Holborn and Chancery Lane underground.

Features

- Private Gated Development
- Over 900 Year Lease
- Split Level
- Three Double Bedrooms
- Two Bathrooms
- No Onward Chain

Sandland Street, London, WC1R



Total area (approx.): 84.0 sq. m (904.1 sq. ft)
(Excluding Void)