



Tavistock Place, WC1H

£675,000

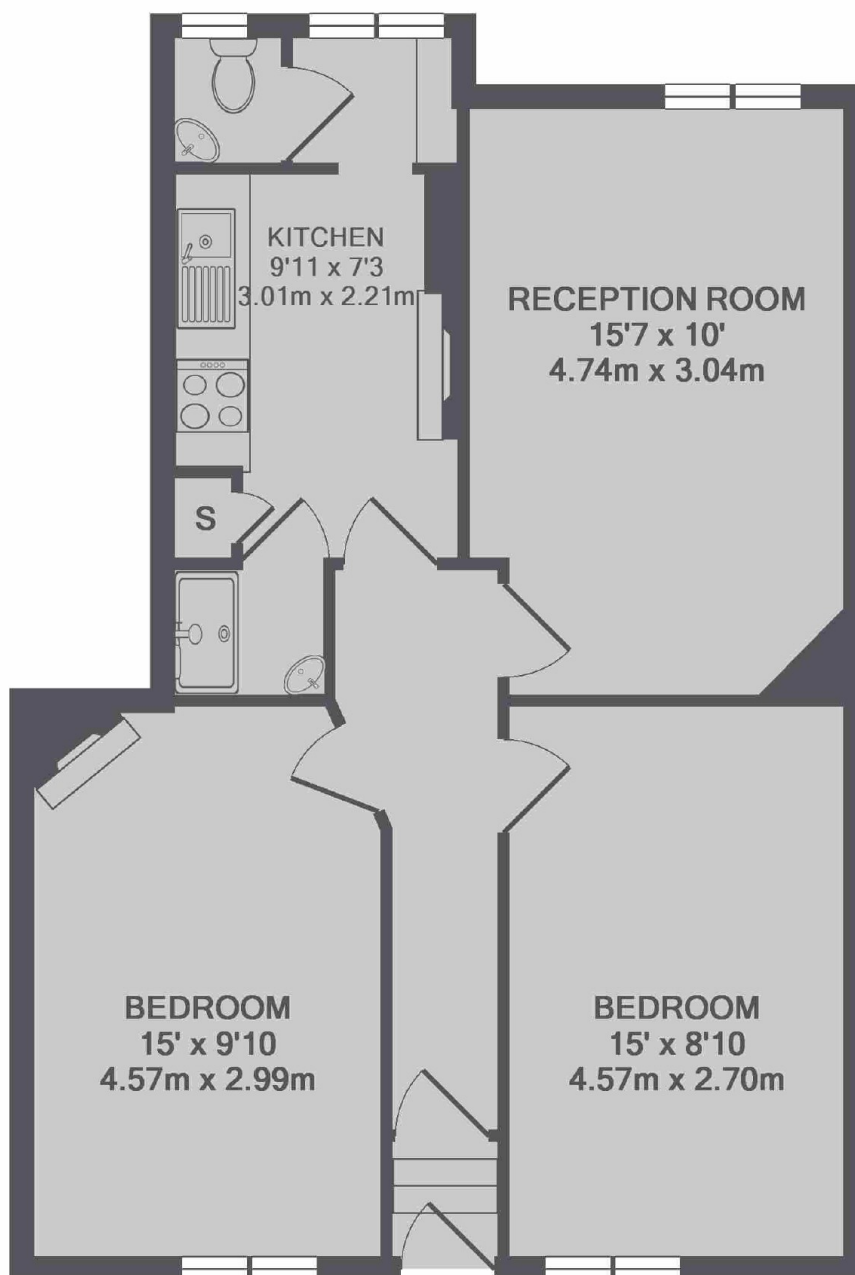
A great sized two double bedroom home located on the third floor with lift access. The property has a separate living room that can be used as a bedroom with an expected rental income of £3450 PCM.

The flat is just moments from Russell Square tube station and the Brunswick shopping centre which is home to an array of shops and restaurants including a large Waitrose supermarket. London's best Universities are also nearby.

Features

- Two Double Bedrooms
- Lift Access
- Long Lease
- Period Mansion Block
- Central Bloomsbury
- No Onward Chain

Tavistock Place, London, WC1H



TOTAL APPROX. FLOOR AREA 636 SQ.FT. (59.1 SQ.M.)
Made with Metropix ©2018

Dexters

Bloomsbury
55-56 Coram Street
London
WC1N 1HB
Sales
020 7833 4466

Energy Rating: D. We aim to make our particulars both accurate and reliable. However they are not guaranteed; nor do they form part of an offer or contract. If you require clarification on any points then please contact us, especially if you're traveling some distance to view. Please note that appliances and heating systems have not been tested and therefore no warranties can be given as to their good working order.

 **RICS** | Regulated
Estate Agent
and Letting Agent

dexters.co.uk