



Woburn Place, WC1H

£400 Per week

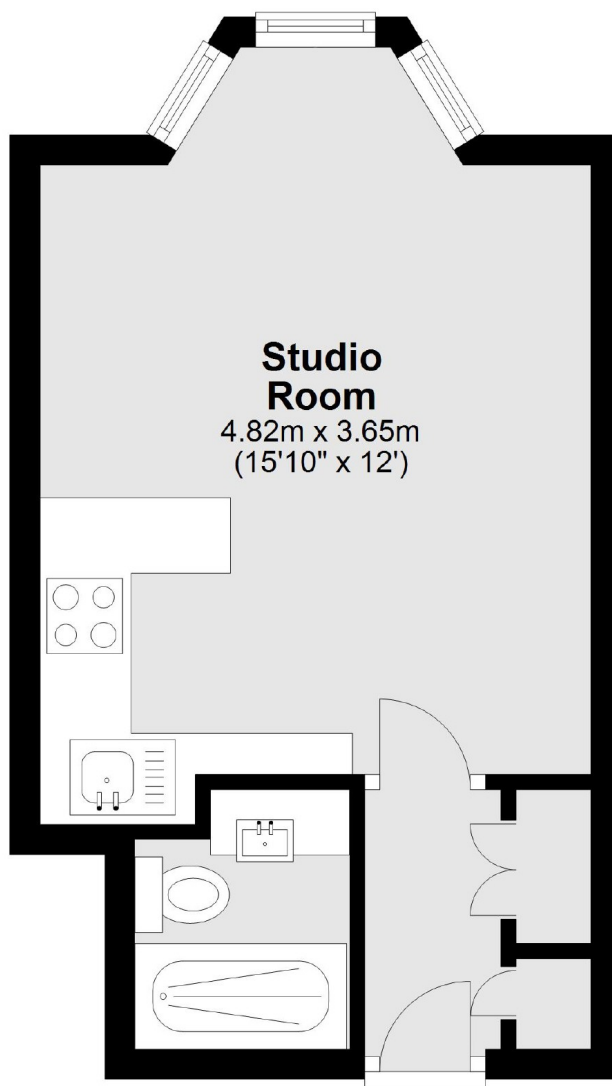
This open plan studio in Russell Court has been newly refurbished with new kitchen and bathroom. It has been recently redecorated throughout and includes hot water, heating and water included in the rent.

Russell Court is a short distance from Russell Square, Holborn and Kings Cross. It is very convenient for UCL, SOAS and LSE. The Brunswick centre is closeby with its shops, cafes and restaurants always popular amongst the local residents.

Features

- Hot Water & Heating Inc
- 24-hour Porter
- Russell Square Location
- Open Plan Room
- New Modern Kitchen
- 3 Lifts

Woburn Place,
London, WC1H



Total area: approx. 21.6 sq. metres (232.5 sq. feet)